



# PARTS CATALOG

Published

2011/5 (May.)

---

0CNP3-G85500

## Directions for the Parts Catalog.

- The parts stipulated in this Parts Catalog are not necessarily standard equipped parts.
- Parts may change without prior notice.
- The following is an example of the Parts Catalog format.

OCF10-G21601 29. FUEL INJECTION PUMP(W/BOOST)

| REF. | LEV. | PARTS NO.  | DESCRIPTION         | Q'TY |     |     |     |     |     | I | R |
|------|------|--|---------------------|------|-----|-----|-----|-----|-----|---|---|
|      |      |  |                     | (A)  | (B) | (C) | (D) | (E) | (F) |   |   |
| 1    | 1    | 729595-51390   | FUEL INJECTION PUMP | 1    | 1   | 1   | 1   | 1   |     |   | 1 |
| 1-1  | 1    | 729595-51391   | FUEL INJECTION PUMP | 1    | 1   | 1   | 1   | 1   |     | N | 1 |
|      |      | (A=E00185) (B=E00200)                                  |                     |      |     |     |     |     |     |   |   |
| 3    | 2    | 26022-060162   | SCREW M 6X 16       | 9    | 9   | 9   | 9   | 9   |     |   |   |
| 3-1  | 2    | 26022-060162   | SCREW M 6X 16       | 4    | 4   | 4   | 4   | 4   |     | K |   |
|      |      | (A=E00156) (B=E00156) (C=E00156) (D=E00156) (E=E00156) |                     |      |     |     |     |     |     |   |   |
| 4    | 2    | 129470-51040   | CAMSHAFT            | 1    | 1   | 1   | 1   | 1   |     |   |   |
| 5    | 2    | 122710-51050   | BEARING, ROLLER     | 2    | 2   | 2   | 2   | 2   |     |   |   |
| 6    | 2    | 129470-51060   | RETAINER            | 1    | 1   | 1   | 1   | 1   |     |   |   |

Remarks

(1) BOOST COMPEMSATOR TYPE. OPTIONAL PART, TO E00155,(4JH-DT, 4JH-DTZ

### ① Ref. No.

The Ref. No. listed may not be in accordance with the illustration Ref. No.

(Ex.) Illustration No.

List Ref No.

1

1

(Before change)

1-1

(After change)

For interchangeable symbols N, R and K, illustrations for new parts may be abbreviated.

### ② Lev. (Level)

Level indication

The numbers below indicate the level of relativity towards the main part.

1 ----- Main parts (Assembly parts)

2 ----- Sub component included in " 1 ".

3 ----- Sub component included in " 2 ".

Note) Parts that are not for sale are partially illustrated but not listed.

### ③ Interchangeability Mark

When a part change takes place, one of the following interchangeability symbols is indicated beside the part.

| Symbol | Interchangeability  | Contents note  |
|--------|---|--|
| N      | Old $\begin{matrix} \leftarrow \text{Yes} \\ \text{No} \rightarrow \end{matrix}$ New  | New Part is interchangeable for Old Part but Old Part is not interchangeable for New Part. |
| Q      | Old $\begin{matrix} \leftarrow \text{No} \\ \text{Yes} \rightarrow \end{matrix}$ New  | New Part is not interchangeable for Old Part but Old Part is interchangeable for New Part. |
| R      | Old $\begin{matrix} \leftarrow \text{Yes} \\ \text{Yes} \rightarrow \end{matrix}$ New | New/ Old Parts are both interchangeable.   |
| S      | Old $\begin{matrix} \leftarrow \text{No} \\ \text{No} \rightarrow \end{matrix}$ New   | New/ Old Parts are both not interchangeable.   |
| W      |   | Part newly added.  |
| Z      |   | Part discontinued.   |
| F      |   | Not interchangeable by a single part but interchangeable together with related parts.      |
| K      |   | Changes only for used parts quantities.  |

### ④ Effective Machine No.

When a part changes, the effective Machine No. will be indicated in the (A)-(F) column.

| Product Symbol | Product No.               | Product Symbol | Product No.                       |
|----------------|---------------------------|----------------|-----------------------------------|
| C              | Clutch No. Compressor No. | F              | Machine No. (Agricultural Equip.) |
| D              | Drive No.                 | M              | Machine No.                       |
| E              | Engine No.                |                |                                   |

Note 1) A date may follow the symbol. (Ex.) 1996.01

Note 2) "XXXXX" and "ZZZZZ" are for parts that could not be predicted or for engine models that could not be identified.

Note 3) (A=E00185) is the E (Engine Serial Number) for the column (A) model (in this case 4JH-DT) after the parts design change.

### ⑤ Remarks Mark

Figures or alphabets (symbols) are entered in the remarks column.

The comments (remarks) on parts that are indicated at the bottom of the illustration are the same symbols as those stated above.

# PAINTING COLOR

| SECTION | PAINTING COLOR      | COLOR SPRAY  | MAIN PARTS | COLOR CODE (FIGURE) |
|---------|---------------------|--------------|------------|---------------------|
| Engine  | <b>YANMAR</b> White | TOR-90250002 | Fuel tank  | 14                  |
| Engine  | <b>YANMAR</b> Red 1 | TOR-90400003 | Fan case   | 50                  |
|         |                     |              |            |                     |
|         |                     |              |            |                     |
|         |                     |              |            |                     |
|         |                     |              |            |                     |
|         |                     |              |            |                     |
|         |                     |              |            |                     |
|         |                     |              |            |                     |
|         |                     |              |            |                     |

Please surely use **YANMAR** Genuine color spray any **YANMAR** agricultural machines.

Given painting color may be altered for improvement, etc. without prior notice.

# CONTENTS

MODEL : TE600( )  
PC NO : 0CNP3-G85500

Fig.No. GROUP NAME

## ENGINE UNIT

1. CYLINDER BLOCK
2. CYLINDER HEAD & BONNET
3. LABEL
4. AIR CLEANER & MUFFLER
5. CRANK SHAFT,PISTON & CAMSHAFT
6. FUEL OIL TANK & FUEL OIL LINE
7. CARBURETOR
8. GOVERNOR & CONTROL DEVICE
9. FLY.MAGNET & STARTING DEVICE

## PULLEY & TENSION SECTION

10. ENGINE MOUNTING
11. ENGINE & MAIN PULLEYS
12. TENSION CLUTCH

## TRANSMISSION UNIT

13. TRANSMISSION CASE
14. MAIN SHAFT
15. COUNTER SHAFT
16. FINAL SHAFT
17. AXLE
18. MAIN CHANGE

## WHEEL SECTION

19. FENDER

## HANDLE SECTION

20. HANDLE COLUMN
21. HANDLE

Fig.No. GROUP NAME

## 22. CONTROL LEVER

## ENGINE FRAME SECTION

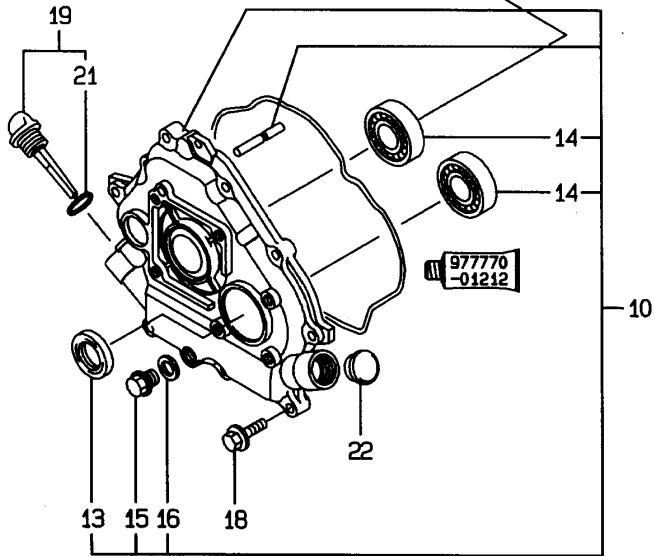
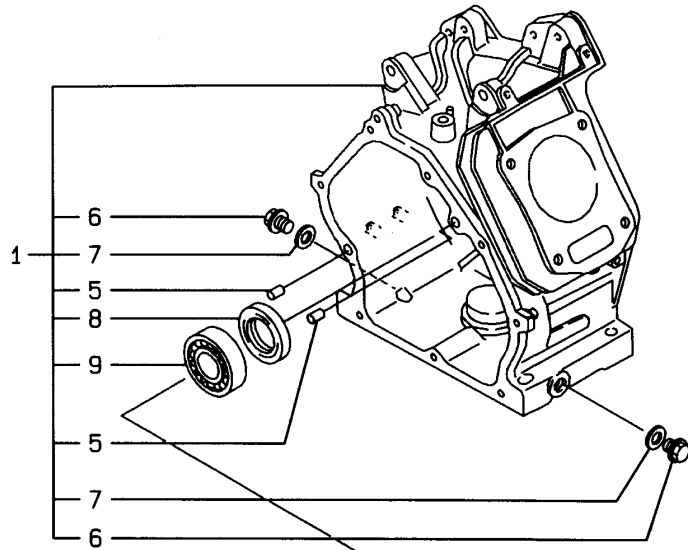
23. ENGINE FRAME
24. REAR HITCH
25. BELT COVER
26. BONNET

## LABELS & ACCESSORIES SECTION

27. UNIVERSAL HITCH
28. ELECTRICAL PARTS
29. LABELS
30. TOOLS & ACCESSORIES

Fig.1. CYLINDER BLOCK

1. CYLINDER BLOCK



Remarks  
 (REMARKS)"EFFECTIVE MACHINE NO." OF  
 ENGINE IS INDICATED ON THE  
 ENGINE LABEL WHICH IS SHOWN  
 IN FIG.9.

OCNP3-G85500 1. CYLINDER BLOCK

(A)=GA160E-SKLA

(B)=

(C)=

(D)=

(E)=

(F)=

| REF. | LEV. | PARTS NO.    | DESCRIPTION          | QTY |     |     |     |     |     | I | R |  |
|------|------|--------------|----------------------|-----|-----|-----|-----|-----|-----|---|---|--|
|      |      |              |                      | (A) | (B) | (C) | (D) | (E) | (F) |   |   |  |
| 1    | 1    | 760690-01561 | BLOCK ASSY, CYLINDER | 1   |     |     |     |     |     |   |   |  |
| 5    | 2    | 114270-01600 | PARALLEL PIN 8X12    | 2   |     |     |     |     |     |   |   |  |
| 6    | 2    | 160610-01690 | PLUG, DRAIN          | 2   |     |     |     |     |     |   |   |  |
| 7    | 2    | 104200-59170 | GASKET 12            | 2   |     |     |     |     |     |   |   |  |
| 8    | 2    | 160690-02220 | OIL SEAL TC25416     | 1   |     |     |     |     |     |   |   |  |
| 9    | 2    | 24101-062050 | BALL BEARING         | 1   |     |     |     |     |     |   |   |  |
| 10   | 1    | 760690-01500 | COVER ASSY, SIDE     | 1   |     |     |     |     |     |   |   |  |
| 13   | 2    | 160690-02220 | OIL SEAL TC25416     | 1   |     |     |     |     |     |   |   |  |
| 14   | 2    | 24101-062050 | BALL BEARING         | 2   |     |     |     |     |     |   |   |  |
| 15   | 2    | 160610-01690 | PLUG, DRAIN          | 1   |     |     |     |     |     |   |   |  |
| 16   | 2    | 104200-59170 | GASKET 12            | 1   |     |     |     |     |     |   |   |  |
| 18   | 1    | 26476-060252 | BOLT M 6X 25,TAPPING | 8   |     |     |     |     |     |   |   |  |
| 19   | 1    | 114299-01760 | CAP, W/LUB.OIL GAUGE | 1   |     |     |     |     |     |   |   |  |
| 21   | 2    | 114299-01950 | O-RING               | 1   |     |     |     |     |     |   |   |  |
| 22   | 1    | 160110-01870 | PLUG, RUBBER W/SCREW | 1   |     |     |     |     |     |   |   |  |

Fig.2. CYLINDER HEAD & BONNET

(A)=GA160E-SKLA

(B)=

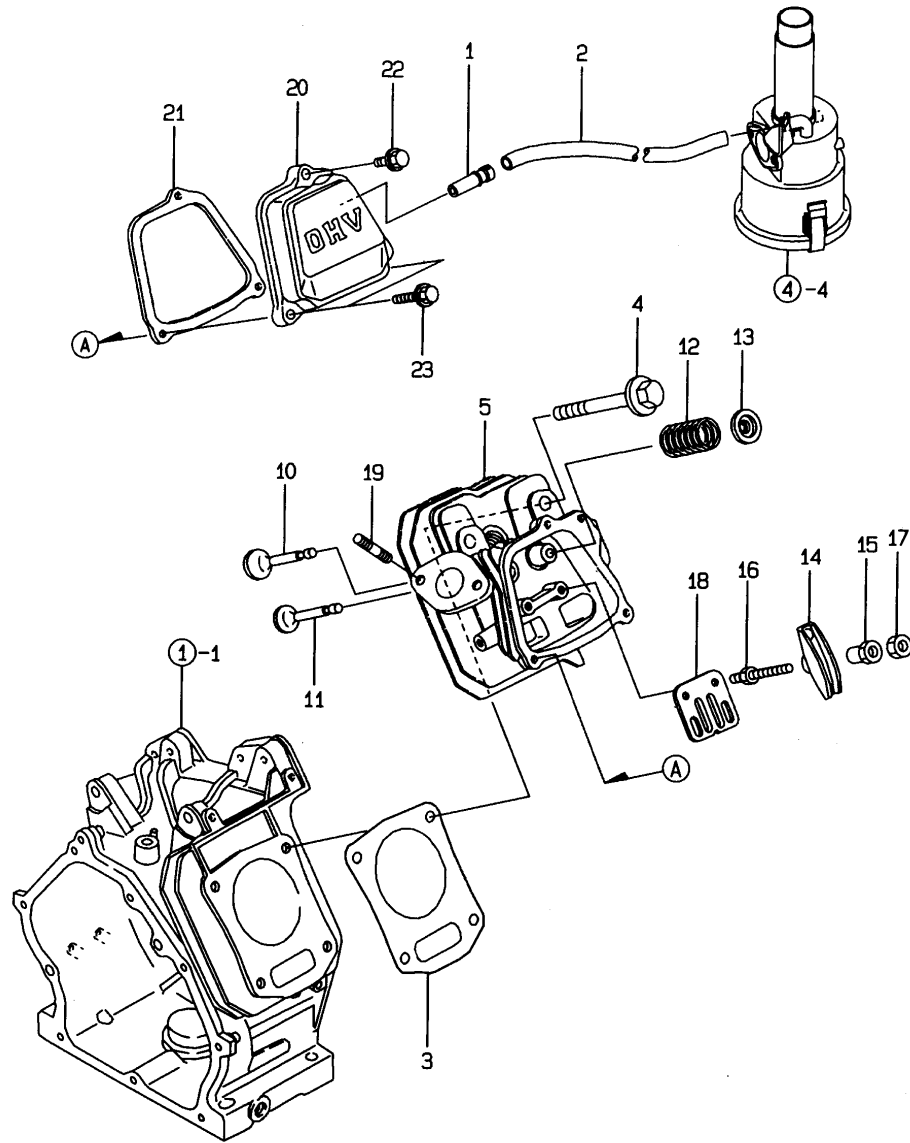
(C)=

(D)=

(E)=

(F)=

2. CYLINDER HEAD & BONNET



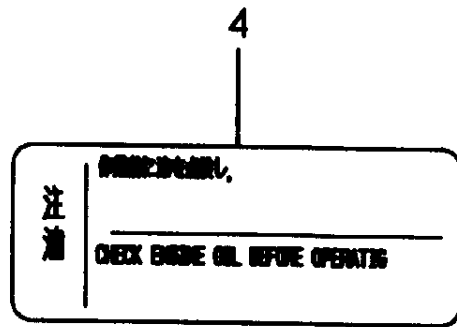
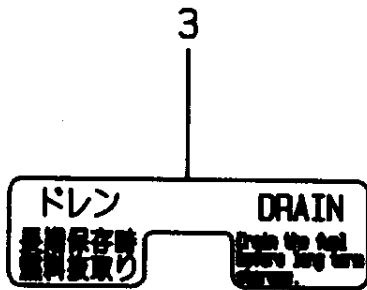
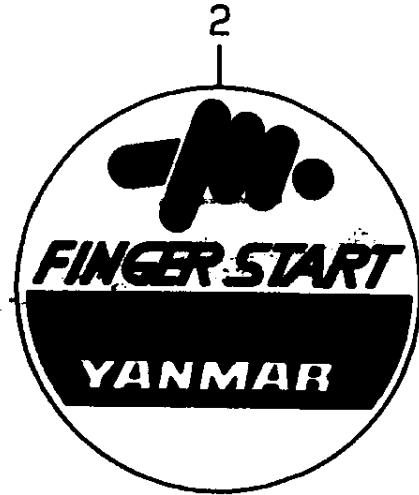
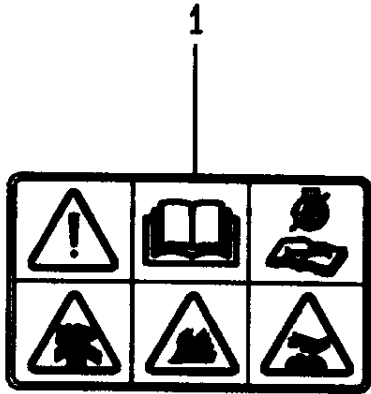
| REF. | LEV. | PARTS NO.    | DESCRIPTION         | QTY |     |     |     |     |     | I | R |
|------|------|--------------|---------------------|-----|-----|-----|-----|-----|-----|---|---|
|      |      |              |                     | (A) | (B) | (C) | (D) | (E) | (F) |   |   |
| 1    | 1    | 160690-03050 | BREATHER            | 1   |     |     |     |     |     |   |   |
| 2    | 1    | 160820-03180 | PIPE, BREATHER      | 1   |     |     |     |     |     |   |   |
| 3    | 1    | 160690-01330 | GASKET, CYL. HEAD   | 1   |     |     |     |     |     |   |   |
| 4    | 1    | 160610-04201 | BOLT M 8X 53        | 4   |     |     |     |     |     |   |   |
| 5    | 1    | 160690-11010 | HEAD ASSY, CYLINDER | 1   |     |     |     |     |     |   |   |
| 10   | 1    | 160690-11100 | VALVE, INTAKE       | 1   |     |     |     |     |     |   |   |
| 11   | 1    | 160690-11110 | VALVE, EXHAUST      | 1   |     |     |     |     |     |   |   |
| 12   | 1    | 160690-11120 | SPRING, VALVE       | 2   |     |     |     |     |     |   |   |
| 13   | 1    | 160690-11180 | RETAINER, SPRING    | 2   |     |     |     |     |     |   |   |
| 14   | 1    | 160690-11200 | ARM, ROCKER         | 2   |     |     |     |     |     |   |   |
| 15   | 1    | 160690-11221 | PIVOT,ROCKER ARM    | 2   |     |     |     |     |     |   |   |
| 16   | 1    | 160690-11271 | BOLT                | 2   |     |     |     |     |     |   |   |
| 17   | 1    | 160690-11280 | NUT M6X 0.5         | 2   |     |     |     |     |     |   |   |
| 18   | 1    | 160690-11290 | PLATE, GUIDE        | 1   |     |     |     |     |     |   |   |
| 19   | 1    | 26216-080182 | STUD M 8X 18 PLATED | 2   |     |     |     |     |     |   |   |
| 20   | 1    | 160690-11300 | BONNET              | 1   |     |     |     |     |     |   |   |
| 21   | 1    | 160690-11310 | GASKET, BONNET      | 1   |     |     |     |     |     |   |   |
| 22   | 1    | 26106-060202 | BOLT M 6X 20 PLATED | 1   |     |     |     |     |     |   |   |
| 23   | 1    | 26106-060352 | BOLT M 6X 35 PLATED | 2   |     |     |     |     |     |   |   |

N149619

Remarks  
 (REMARKS)"EFFECTIVE MACHINE NO." OF  
 ENGINE IS INDICATED ON THE  
 ENGINE LABEL WHICH IS SHOWN  
 IN FIG.9.

Fig.3. LABEL

### 3. LABEL



Remarks  
 (REMARKS)"EFFECTIVE MACHINE NO." OF  
 ENGINE IS INDICATED ON THE  
 ENGINE LABEL WHICH IS SHOWN  
 IN FIG.9.

### OCNP3-G85500 3. LABEL

(A)=GA160E-SKLA

(B)=

(C)=

(D)=

(E)=

(F)=

| REF. | LEV. | PARTS NO.    | DESCRIPTION         | Q'TY |     |     |     |     |     | I | R |
|------|------|--------------|---------------------|------|-----|-----|-----|-----|-----|---|---|
|      |      |              |                     | (A)  | (B) | (C) | (D) | (E) | (F) |   |   |
| 1    | 1    | 160991-07260 | LABEL               | 1    |     |     |     |     |     |   |   |
| 2    | 1    | 160798-07100 | LABEL, FINGER START | 1    |     |     |     |     |     |   |   |
| 3    | 1    | 160690-07260 | LABEL, DRAIN        | 1    |     |     |     |     |     |   |   |
| 4    | 1    | 160692-07370 | LABEL, AIR CLEANER  | 1    |     |     |     |     |     |   |   |

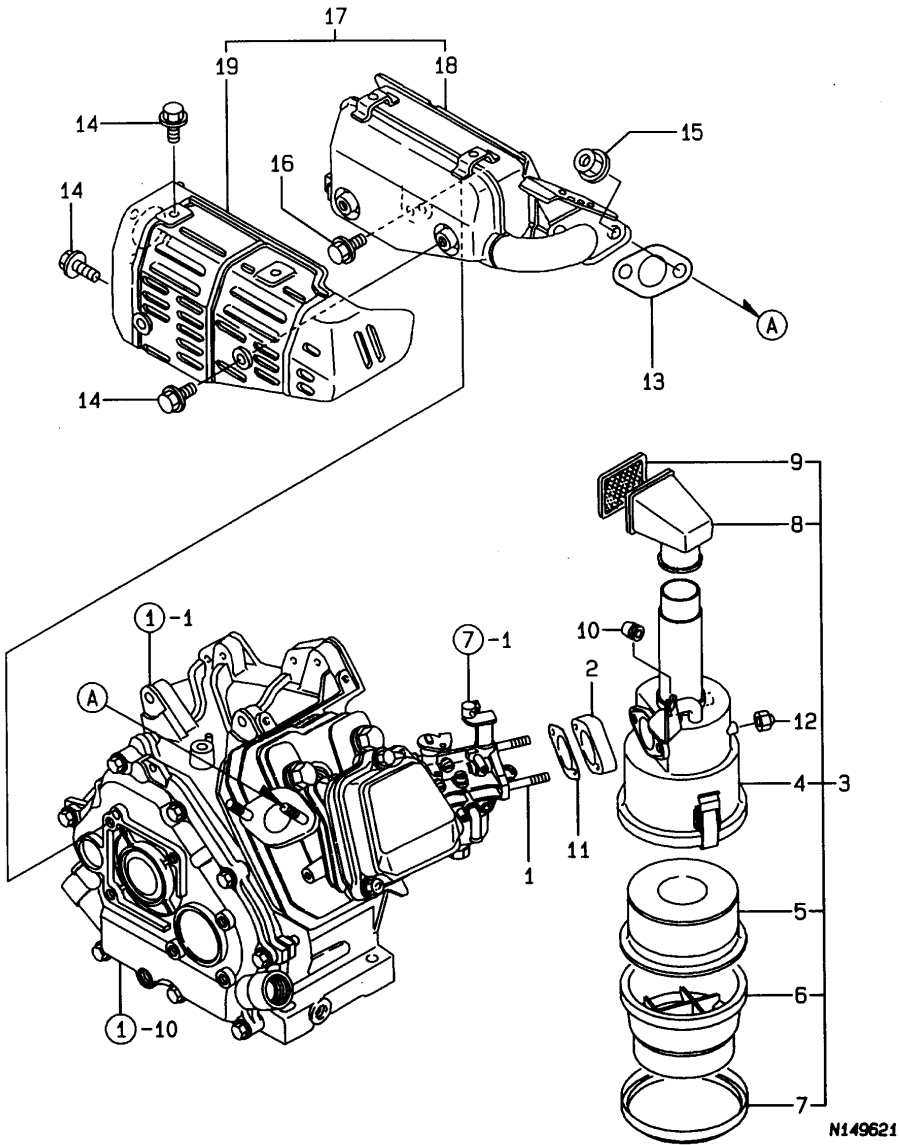
Fig.4. AIR CLEANER & MUFFLER

(A)=GA160E-SKLA  
(B)=  
(C)=

(D)=  
(E)=  
(F)=

4. AIR CLEANER & MUFFLER

| REF. | LEV. | PARTS NO.    | DESCRIPTION          | QTY |     |     |     |     |     | I | R |
|------|------|--------------|----------------------|-----|-----|-----|-----|-----|-----|---|---|
|      |      |              |                      | (A) | (B) | (C) | (D) | (E) | (F) |   |   |
| 1    | 1    | 160692-04310 | BOLT M6X143          | 2   |     |     |     |     |     |   |   |
| 2    | 1    | 160690-12261 | SPACER, AIR CLEANER  | 1   |     |     |     |     |     |   |   |
| 3    | 1    | 160692-12500 | CLEANER ASSY, AIR    | 1   |     |     |     |     |     |   |   |
| 4    | 2    | 160692-12510 | BODY ASSY            | 1   |     |     |     |     |     |   |   |
| 5    | 2    | 160692-12520 | ELEMENT ASSY,AIR CL. | 1   |     |     |     |     |     |   |   |
| 6    | 2    | 160692-12530 | SUMP, OIL            | 1   |     |     |     |     |     |   |   |
| 7    | 2    | 160692-12540 | RING                 | 1   |     |     |     |     |     |   |   |
| 8    | 2    | 160762-12870 | CAP, INTAKE          | 1   |     |     |     |     |     |   |   |
| 9    | 2    | 160692-12920 | NET                  | 1   |     |     |     |     |     |   |   |
| 10   | 1    | 160763-12600 | GROMMET, AIR CLEANER | 1   |     |     |     |     |     |   |   |
| 11   | 1    | 160610-56151 | PACKING,CARBURETOR   | 1   |     |     |     |     |     |   |   |
| 12   | 1    | 26657-060002 | CAP NUT M 6          | 2   |     |     |     |     |     |   |   |
| 13   | 1    | 160690-13200 | GASKET, MUFFLER      | 1   |     |     |     |     |     |   |   |
| 14   | 1    | 114252-13950 | BOLT M 6X 8 PLATED   | 5   |     |     |     |     |     |   |   |
| 15   | 1    | 26366-080002 | NUT M 8              | 2   |     |     |     |     |     |   |   |
| 16   | 1    | 26106-080122 | BOLT M 8X 12 PLATED  | 1   |     |     |     |     |     |   |   |
| 17   | 1    | 160692-13020 | MUFFLER ASSY         | 1   |     |     |     |     |     |   |   |
| 18   | 2    | 160692-13500 | MUFFLER              | 1   |     |     |     |     |     |   |   |
| 19   | 2    | 160692-13530 | COVER, MUFFLER       | 1   |     |     |     |     |     |   |   |

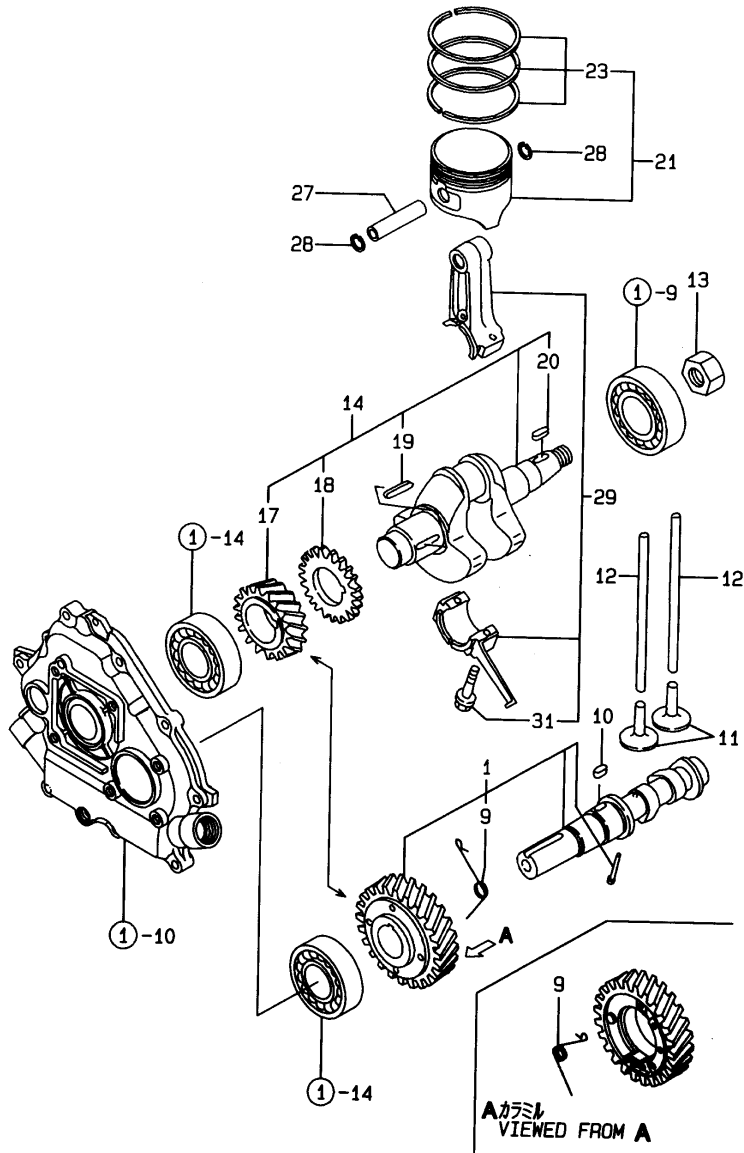


Remarks  
(REMARKS)"EFFECTIVE MACHINE NO." OF ENGINE IS INDICATED ON THE ENGINE LABEL WHICH IS SHOWN IN FIG.9.



Fig.5. CRANK SHAFT,PISTON & CAMSHAFT

5. CRANK SHAFT,PISTON & CAMSHAFT



Remarks  
 (REMARKS)"EFFECTIVE MACHINE NO." OF  
 ENGINE IS INDICATED ON THE  
 ENGINE LABEL WHICH IS SHOWN  
 IN FIG.9.

0CNP3-G85500 5. CRANK SHAFT,PISTON & CAMSHAFT

(A)=GA160E-SKLA

(B)=

(C)=

(D)=

(E)=

(F)=

| REF. | LEV. | PARTS NO.    | DESCRIPTION          | QTY |     |     |     |     |     | I | R |
|------|------|--------------|----------------------|-----|-----|-----|-----|-----|-----|---|---|
|      |      |              |                      | (A) | (B) | (C) | (D) | (E) | (F) |   |   |
| 1    | 1    | 160692-14051 | CAMSHAFT ASSY        | 1   |     |     |     |     |     |   |   |
| 9    | 2    | 160690-14571 | SPRING, DECOMP.      | 1   |     |     |     |     |     |   |   |
| 10   | 1    | 22512-040120 | KEY 4X 12            | 1   |     |     |     |     |     |   |   |
| 11   | 1    | 160490-14200 | TAPPET               | 2   |     |     |     |     |     |   |   |
| 12   | 1    | 114250-14400 | ROD, PUSH            | 2   |     |     |     |     |     |   |   |
| 13   | 1    | 160610-04910 | NUT M14              | 1   |     |     |     |     |     |   |   |
| 14   | 1    | 760690-21701 | CRANKSHAFT ASSY      | 1   |     |     |     |     |     |   |   |
| 17   | 2    | 160690-21201 | GEAR, CRANKSHAFT     | 1   |     |     |     |     |     |   |   |
| 18   | 2    | 160590-21210 | GEAR, IDLE           | 1   |     |     |     |     |     |   |   |
| 19   | 2    | 22512-040120 | KEY 4X 12            | 1   |     |     |     |     |     |   |   |
| 20   | 2    | 22512-040160 | KEY 4X 16            | 1   |     |     |     |     |     |   |   |
| 21   | 1    | 160690-22011 | PISTON W/RINGS       | 1   |     |     |     |     |     |   |   |
| 23   | 2    | 760690-22501 | RING SET (T.R.=1.5)  | 1   |     |     |     |     |     |   |   |
| 27   | 1    | 160690-22300 | PIN, PISTON          | 1   |     |     |     |     |     |   |   |
| 28   | 1    | 22252-000160 | CIRCLIP 16           | 2   |     |     |     |     |     |   |   |
| 29   | 1    | 760690-23700 | ROD ASSY, CONNECTING | 1   |     |     |     |     |     |   |   |
| 31   | 2    | 26106-060302 | BOLT M 6X 30 PLATED  | 2   |     |     |     |     |     |   |   |

Fig.6. FUEL OIL TANK & FUEL OIL LINE

(A)=GA160E-SKLA

(B)=

(C)=

(D)=

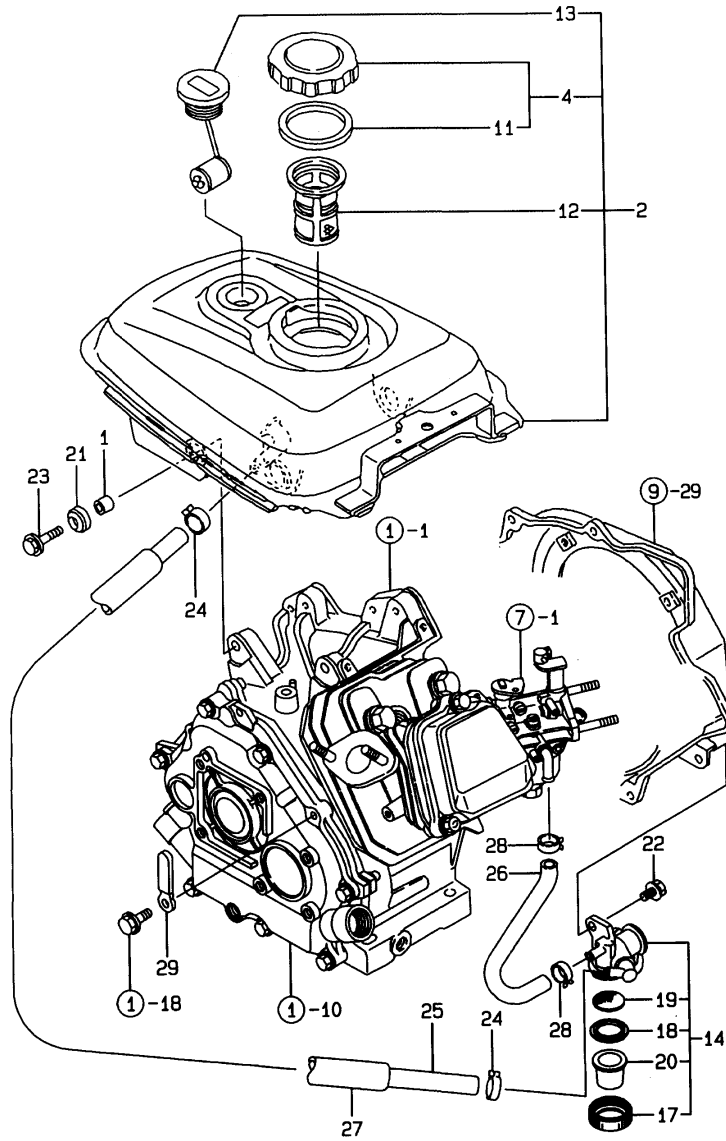
(E)=

(F)=

QTY

(A) (B) (C) (D) (E) (F)

6. FUEL OIL TANK & FUEL OIL LINE

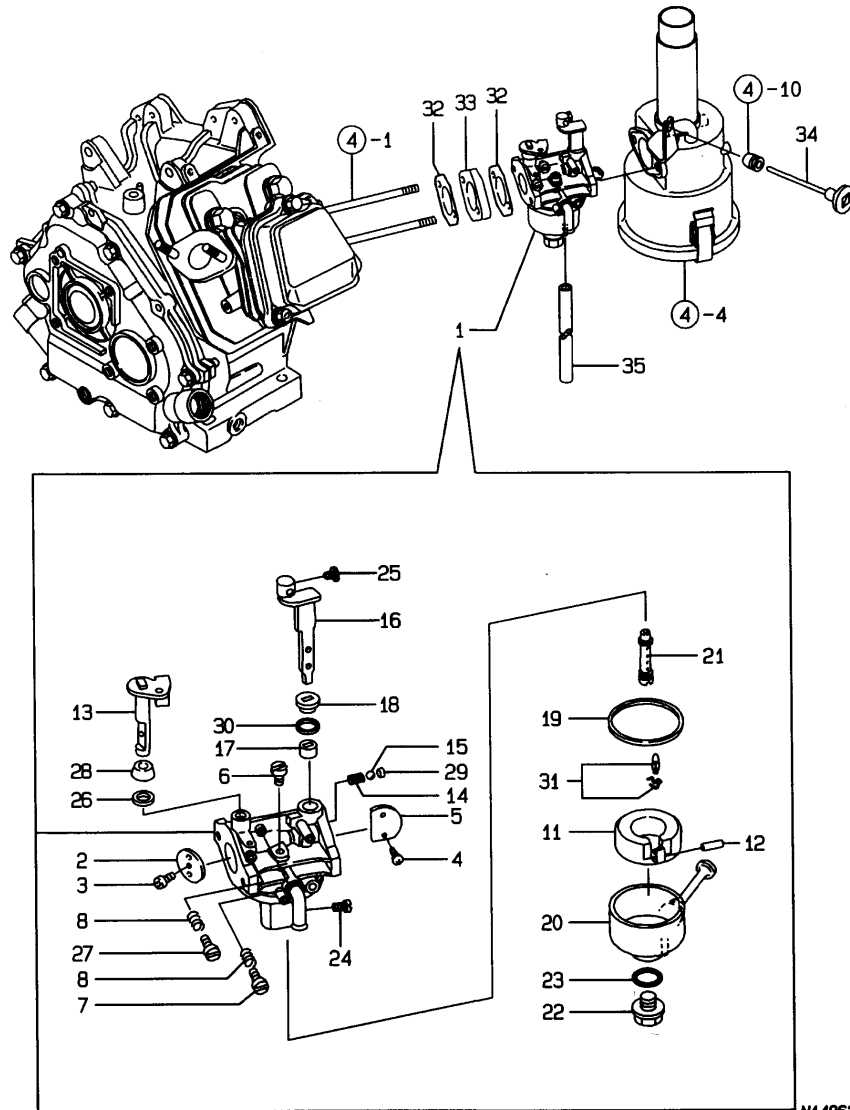


| REF. | LEV. | PARTS NO.    | DESCRIPTION          | (A) | (B) | (C) | (D) | (E) | (F) | I | R |
|------|------|--------------|----------------------|-----|-----|-----|-----|-----|-----|---|---|
| 1    | 1    | 114250-45310 | COLLAR               | 4   |     |     |     |     |     |   |   |
| 2    | 1    | 760692-55704 | TANK,FUEL(WHITE)(14) | 1   |     |     |     |     |     |   |   |
| 4    | 2    | 160710-55061 | CAP ASSY, FUEL TANK  | 1   |     |     |     |     |     |   |   |
| 11   | 3    | 160393-55050 | GASKET, TANK CAP     | 1   |     |     |     |     |     |   |   |
| 12   | 2    | 160610-55100 | STRAINER             | 1   |     |     |     |     |     |   |   |
| 13   | 2    | 160692-55160 | GAUGE, FUEL          | 1   |     |     |     |     |     |   |   |
| 14   | 1    | 160692-55300 | COCK ASSY, FUEL      | 1   |     |     |     |     |     |   |   |
| 17   | 2    | 160710-55360 | RING                 | 1   |     |     |     |     |     |   |   |
| 18   | 2    | 160710-55370 | GASKET               | 1   |     |     |     |     |     |   |   |
| 19   | 2    | 160710-55382 | FILTER               | 1   |     |     |     |     |     |   |   |
| 20   | 2    | 160710-55390 | CUP                  | 1   |     |     |     |     |     |   |   |
| 21   | 1    | 160690-55461 | DAMPER, FUEL TANK    | 4   |     |     |     |     |     |   |   |
| 22   | 1    | 26106-060102 | BOLT 6X 10 PLATED    | 1   |     |     |     |     |     |   |   |
| 23   | 1    | 160690-55140 | BOLT, FAN CASE       | 4   |     |     |     |     |     |   |   |
| 24   | 1    | 106990-44660 | CLIP,HOSE            | 2   |     |     |     |     |     |   |   |
| 25   | 1    | 160692-59351 | HOSE,FO(A-368        | 1   |     |     |     |     |     |   |   |
| 26   | 1    | 160820-59391 | HOSE,FUEL            | 1   |     |     |     |     |     |   |   |
| 26-1 | 1    | 160792-59361 | HOSE, FUEL OIL       | 1   |     |     |     |     |     |   | N |
| 27   | 1    | 160690-59400 | PROTECTOR, PIPE      | 1   |     |     |     |     |     |   |   |
| 28   | 1    | 124060-77680 | CLAMP 10             | 2   |     |     |     |     |     |   |   |
| 29   | 1    | 160710-78710 | CLAMP, CORD          | 1   |     |     |     |     |     |   |   |

Remarks  
 (REMARKS)"EFFECTIVE MACHINE NO." OF  
 ENGINE IS INDICATED ON THE  
 ENGINE LABEL WHICH IS SHOWN  
 IN FIG.9.

# Fig.7. CARBURETOR

## 7. CARBURETOR



N149624

Remarks  
 (1) REPAIR PART.  
 (REMARKS)"EFFECTIVE MACHINE NO." OF  
 ENGINE IS INDICATED ON THE  
 ENGINE LABEL WHICH IS SHOWN  
 IN FIG.9.

## OCNP3-G85500 7. CARBURETOR

(A)=GA160E-SKLA

(B)=

(C)=

(D)=

(E)=

(F)=

| REF. | LEV. | PARTS NO.    | DESCRIPTION           | QTY |     |     |     |     |     | I | R |
|------|------|--------------|-----------------------|-----|-----|-----|-----|-----|-----|---|---|
|      |      |              |                       | (A) | (B) | (C) | (D) | (E) | (F) |   |   |
| 1    | 1    | 160692-56023 | CARBURETOR            | 1   |     |     |     |     |     |   |   |
| 2    | 2    | 160592-56540 | VALVE, THROTTLE       | 1   |     |     |     |     |     |   |   |
| 3    | 2    | 160690-56560 | SCREW                 | 1   |     |     |     |     |     |   |   |
| 4    | 2    | 160690-56570 | SCREW                 | 2   |     |     |     |     |     |   |   |
| 5    | 2    | 160692-56860 | VALVE, CHOKE          | 1   |     |     |     |     |     |   |   |
| 6    | 2    | 160710-56740 | JET, PILOT            | 1   |     |     |     |     |     |   |   |
| 7    | 2    | 160692-56710 | SCREW                 | 1   |     |     |     |     |     |   |   |
| 8    | 2    | 181230-56380 | SPRING                | 2   |     |     |     |     |     |   |   |
| 11   | 2    | 160769-56620 | FLOAT ASSY            | 1   |     |     |     |     |     |   |   |
| 12   | 2    | 160610-56630 | PIN, FLOAT            | 1   |     |     |     |     |     |   |   |
| 13   | 2    | 160692-56640 | SHAFT, THROTTLE       | 1   |     |     |     |     |     |   |   |
| 14   | 2    | 160310-56980 | SPRING, CHOKE         | 1   |     |     |     |     |     |   |   |
| 15   | 2    | 160310-56990 | BALL, STEEL           | 1   |     |     |     |     |     |   |   |
| 16   | 2    | 160692-56650 | LEVER, CHOKE          | 1   |     |     |     |     |     |   |   |
| 17   | 2    | 160810-56580 | RING, CHOKE SHAFT     | 1   |     |     |     |     |     |   |   |
| 18   | 2    | 160810-56590 | RING, CHOKE LEVER     | 1   |     |     |     |     |     |   |   |
| 19   | 2    | 160610-56610 | GASKET                | 1   |     |     |     |     |     |   |   |
| 20   | 2    | 160598-56660 | BODY, CHAMBER         | 1   |     |     |     |     |     |   |   |
| 21   | 2    | 160692-56671 | JET, MAIN             | 1   |     |     |     |     |     |   |   |
| 22   | 2    | 160893-56650 | BOLT                  | 1   |     |     |     |     |     |   |   |
| 23   | 2    | 160893-56660 | O-RING                | 1   |     |     |     |     |     |   |   |
| 24   | 2    | 160698-56620 | JET, MAIN             | 1   |     |     |     |     |     |   |   |
| 25   | 2    | 26117-040088 | BOLT M 4X 8 PLATED    | 1   |     |     |     |     |     |   |   |
| 26   | 2    | 160640-56850 | SEAL                  | 1   |     |     |     |     |     |   |   |
| 27   | 2    | 160667-56750 | SCREW, ADJUSTING      | 1   |     |     |     |     |     |   |   |
| 28   | 2    | 160702-56720 | RING                  | 1   |     |     |     |     |     |   |   |
| 29   | 2    | 160692-56700 | SEAL, RUBBER          | 1   |     |     |     |     |     |   |   |
| 30   | 2    | 160692-56800 | SEAL, RUBBER          | 1   |     |     |     |     |     |   |   |
| 31   | 1    | 160692-56560 | VALVE, NEEDLE(RUBBER) | 1   |     |     |     |     |     |   | 1 |
| 32   | 1    | 160610-56151 | PACKING,CARBURETOR    | 2   |     |     |     |     |     |   |   |
| 33   | 1    | 160690-56160 | SPACER                | 1   |     |     |     |     |     |   |   |
| 34   | 1    | 160692-56900 | ROD, CHOKE            | 1   |     |     |     |     |     |   |   |
| 35   | 1    | 23061-030180 | HOSE D5/3             | 1   |     |     |     |     |     |   |   |

Fig.8. GOVERNOR & CONTROL DEVICE

(A)=GA160E-SKLA

(B)=

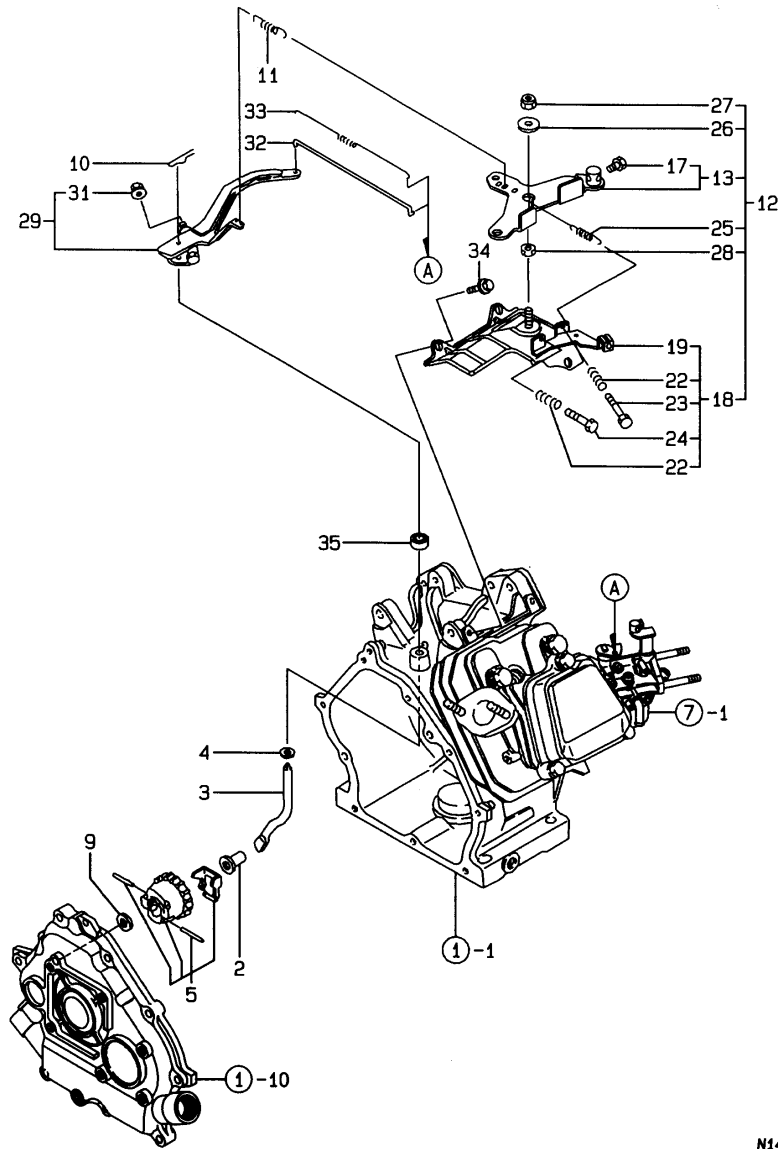
(C)=

(D)=

(E)=

(F)=

8. GOVERNOR & CONTROL DEVICE



N149625

| REF. | LEV. | PARTS NO.    | DESCRIPTION          | QTY |     |     |     |     |     | I | R |
|------|------|--------------|----------------------|-----|-----|-----|-----|-----|-----|---|---|
|      |      |              |                      | (A) | (B) | (C) | (D) | (E) | (F) |   |   |
| 2    | 1    | 160690-61301 | SPINDLE, GOVERNOR    | 1   |     |     |     |     |     |   |   |
| 3    | 1    | 160690-61311 | SHAFT, GOV. LEVER    | 1   |     |     |     |     |     |   |   |
| 4    | 1    | 160690-61450 | WASHER               | 1   |     |     |     |     |     |   |   |
| 5    | 1    | 160690-61600 | GEAR ASSY, GOV.      | 1   |     |     |     |     |     |   |   |
| 9    | 1    | 160120-76940 | WASHER               | 1   |     |     |     |     |     |   |   |
| 10   | 1    | 22372-080000 | SNAP PIN (JASO 8)    | 1   |     |     |     |     |     |   |   |
| 11   | 1    | 160690-66011 | SPRING, GOVERNOR     | 1   |     |     |     |     |     |   |   |
| 12   | 1    | 160692-66101 | CONTROL ASSY         | 1   |     |     |     |     |     |   |   |
| 13   | 2    | 160692-66051 | LEVER ASSY, CONTROL  | 1   |     |     |     |     |     |   |   |
| 17   | 3    | 26117-040088 | BOLT M 4X 8 PLATED   | 1   |     |     |     |     |     |   |   |
| 18   | 2    | 160690-66111 | BASE ASSY, CONTROL   | 1   |     |     |     |     |     |   |   |
| 19   | 3    | 160690-66143 | BASE, CONTROL        | 1   |     |     |     |     |     |   |   |
| 22   | 3    | 160520-66291 | SPRING               | 2   |     |     |     |     |     |   |   |
| 23   | 3    | 26117-040257 | BOLT M 4X 25         | 1   |     |     |     |     |     |   |   |
| 24   | 3    | 26117-040357 | BOLT M 4X 35         | 1   |     |     |     |     |     |   |   |
| 25   | 2    | 160664-66220 | SPRING, RETURN       | 1   |     |     |     |     |     |   |   |
| 26   | 2    | 160670-66350 | COLLAR               | 1   |     |     |     |     |     |   |   |
| 27   | 2    | 26347-060002 | U-NUT M 6            | 1   |     |     |     |     |     |   |   |
| 28   | 2    | 26757-060002 | NUT M 6              | 1   |     |     |     |     |     |   |   |
| 29   | 1    | 160690-66180 | LEVER ASSY, GOVERNOR | 1   |     |     |     |     |     |   |   |
| 31   | 2    | 26366-060002 | NUT M 6              | 1   |     |     |     |     |     |   |   |
| 32   | 1    | 160690-66200 | LINK, THROTTLE       | 1   |     |     |     |     |     |   |   |
| 33   | 1    | 160690-66210 | SPRING, TENSION      | 1   |     |     |     |     |     |   |   |
| 34   | 1    | 26476-060142 | BOLT M 6X 14,TAPPING | 3   |     |     |     |     |     |   |   |
| 35   | 1    | 114770-61600 | SEAL, OIL            | 1   |     |     |     |     |     |   |   |

Remarks  
 (REMARKS)"EFFECTIVE MACHINE NO." OF  
 ENGINE IS INDICATED ON THE  
 ENGINE LABEL WHICH IS SHOWN  
 IN FIG.9.

Fig.9. FLY.MAGNET & STARTING DEVICE

(A)=GA160E-SKLA

(B)=

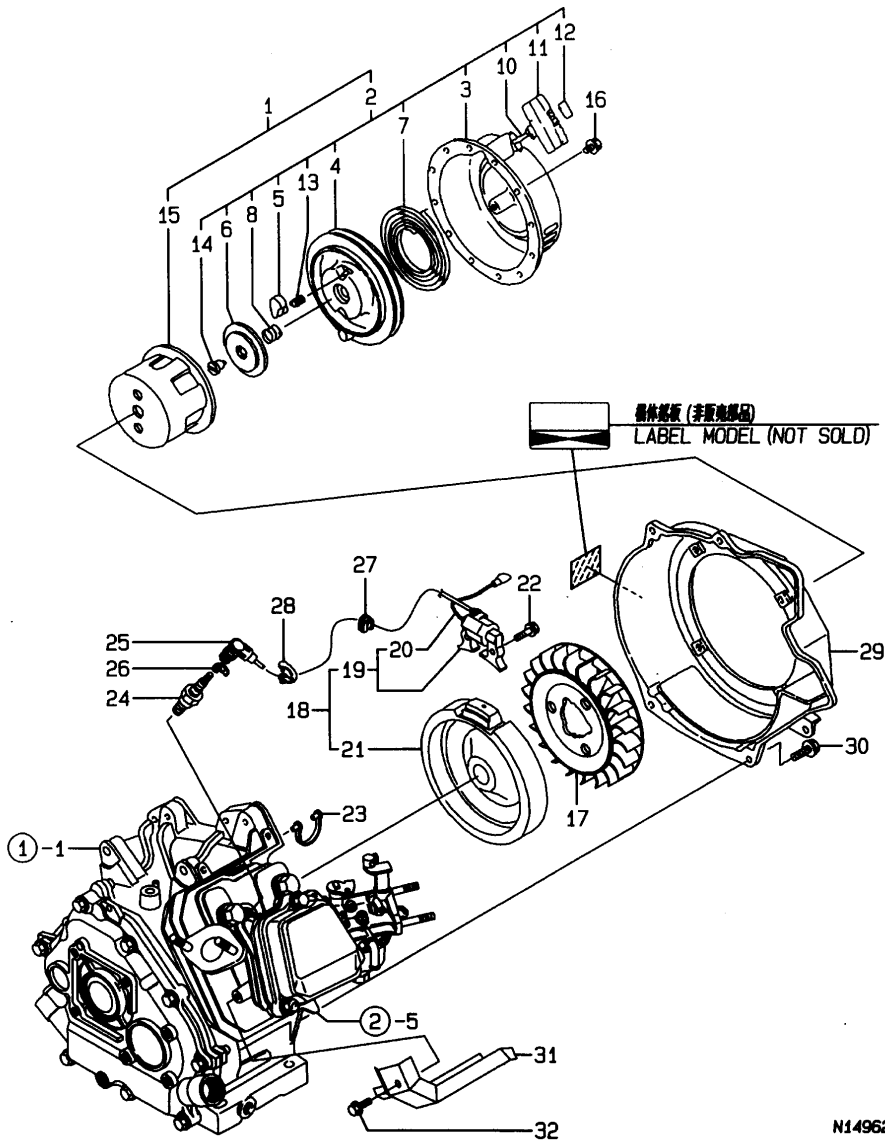
(C)=

(D)=

(E)=

(F)=

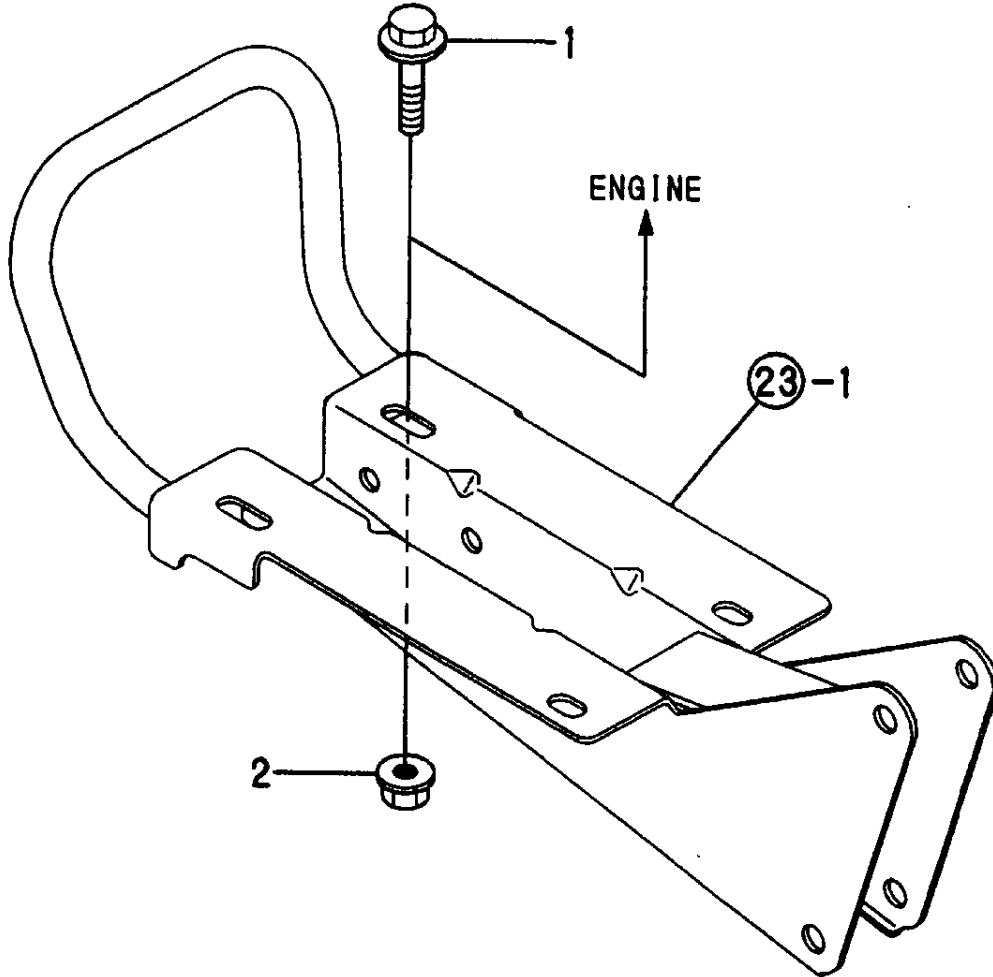
9. FLY.MAGNET & STARTING DEVICE



| REF. | LEV. | PARTS NO.    | DESCRIPTION           | QTY |     |     |     |     |     | I | R |
|------|------|--------------|-----------------------|-----|-----|-----|-----|-----|-----|---|---|
|      |      |              |                       | (A) | (B) | (C) | (D) | (E) | (F) |   |   |
| 1    | 1    | 160693-76051 | STARTER ASSY, RECOIL  | 1   |     |     |     |     |     |   |   |
| 2    | 2    | 160693-76251 | RECOIL ASSY           | 1   |     |     |     |     |     |   |   |
| 3    | 3    | 160592-76510 | CASE, STARTER         | 1   |     |     |     |     |     |   |   |
| 4    | 3    | 160690-76521 | REEL                  | 1   |     |     |     |     |     |   |   |
| 5    | 3    | 160690-76801 | RATCHET               | 2   |     |     |     |     |     |   |   |
| 6    | 3    | 160690-76531 | GUIDE, RATCHET        | 1   |     |     |     |     |     |   |   |
| 7    | 3    | 160690-76540 | SPRING, SPIRAL        | 1   |     |     |     |     |     |   |   |
| 8    | 3    | 160690-76561 | SPRING, FRICTION      | 1   |     |     |     |     |     |   |   |
| 10   | 3    | 160690-76631 | ROPE, STARTING        | 1   |     |     |     |     |     |   |   |
| 11   | 3    | 160690-76620 | KNOB, STARTER         | 1   |     |     |     |     |     |   |   |
| 12   | 3    | 160690-76830 | CAP, KNOB             | 1   |     |     |     |     |     |   |   |
| 13   | 3    | 160690-76570 | SPRING, RETURN        | 2   |     |     |     |     |     |   |   |
| 14   | 3    | 160698-76580 | SETSCREW              | 1   |     |     |     |     |     |   |   |
| 15   | 2    | 160690-76591 | PULLEY, STARTER       | 1   |     |     |     |     |     |   |   |
| 16   | 1    | 26106-060082 | BOLT M 6X 8 PLATED    | 4   |     |     |     |     |     |   |   |
| 17   | 1    | 160699-45010 | FAN, COOLING          | 1   |     |     |     |     |     |   |   |
| 18   | 1    | 160690-78083 | MAGNET ASSY, FLYWHEEL | 1   |     |     |     |     |     |   |   |
| 19   | 2    | 160690-78532 | IGNITER               | 1   |     |     |     |     |     |   |   |
| 20   | 3    | 160690-78230 | CORD, STOP            | 1   |     |     |     |     |     |   |   |
| 21   | 2    | 160690-78542 | ROTOR                 | 1   |     |     |     |     |     |   |   |
| 22   | 1    | 26476-060302 | BOLT M 6X 30, TAPPING | 2   |     |     |     |     |     |   |   |
| 23   | 1    | 29610-000650 | CLAMP, SPEED 065      | 1   |     |     |     |     |     |   |   |
| 24   | 1    | 160793-78010 | PLUG, SPARK           | 1   |     |     |     |     |     |   |   |
| 25   | 1    | 160700-78040 | CAP, PLUG             | 1   |     |     |     |     |     |   |   |
| 26   | 1    | 160700-78050 | TERMINAL, PLUG        | 1   |     |     |     |     |     |   |   |
| 27   | 1    | 160700-78720 | GROMMET               | 1   |     |     |     |     |     |   |   |
| 28   | 1    | 29610-000950 | CLAMP, SPEED 095      | 1   |     |     |     |     |     |   |   |
| 29   | 1    | 160692-45110 | CASE, FAN (RED)(50)   | 1   |     |     |     |     |     |   |   |
| 30   | 1    | 26476-060142 | BOLT M 6X 14, TAPPING | 4   |     |     |     |     |     |   |   |
| 31   | 1    | 160699-45200 | COVER, CYLINDER       | 1   |     |     |     |     |     |   |   |
| 32   | 1    | 26476-060142 | BOLT M 6X 14, TAPPING | 1   |     |     |     |     |     |   |   |

Remarks  
 (REMARKS)"EFFECTIVE MACHINE NO." OF  
 ENGINE IS INDICATED ON THE  
 ENGINE LABEL WHICH IS SHOWN  
 IN FIG.9.

# 10. ENGINE MOUNTING



(A)=TE600  
(B)=  
(C)=

(D)=  
(E)=  
(F)=

| REF. | LEV. | PARTS NO.    | DESCRIPTION         | Q'TY |     |     |     |     |     | I | R |
|------|------|--------------|---------------------|------|-----|-----|-----|-----|-----|---|---|
|      |      |              |                     | (A)  | (B) | (C) | (D) | (E) | (F) |   |   |
| 1    | 1    | 26107-080352 | BOLT M 8X 35 PLATED | 4    |     |     |     |     |     |   |   |
| 2    | 1    | 26367-080002 | U-NUT M 8           | 4    |     |     |     |     |     |   |   |

---

---

---

---

---

---

---

---

---

---

---

---

---

---

---

---

---

---

---

---

---

---

---

---

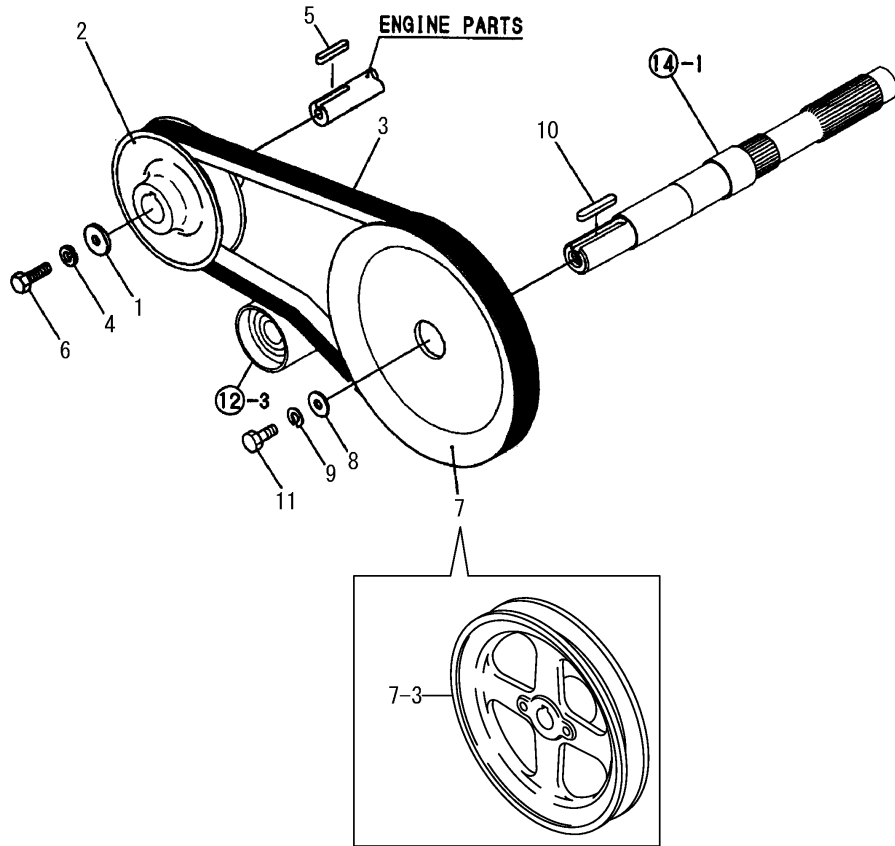
---

N:Old  $\xleftrightarrow{\text{Yes}} \xleftarrow{\text{No}}$  New, Q:Old  $\xleftrightarrow{\text{No}} \xleftarrow{\text{Yes}}$  New, R:Old  $\xleftrightarrow{\text{Yes}} \xleftarrow{\text{No}}$  New, S:Old  $\xleftrightarrow{\text{No}} \xleftarrow{\text{Yes}}$  New, W:Add, Z:Discontinued, F:Interchangeable by set, K:Q'ty Change  
(C)Copy Rights YANMAR CO.,LTD.

Fig.11. ENGINE & MAIN PULLEYS

(A)=TE600  
(B)=  
(C)=

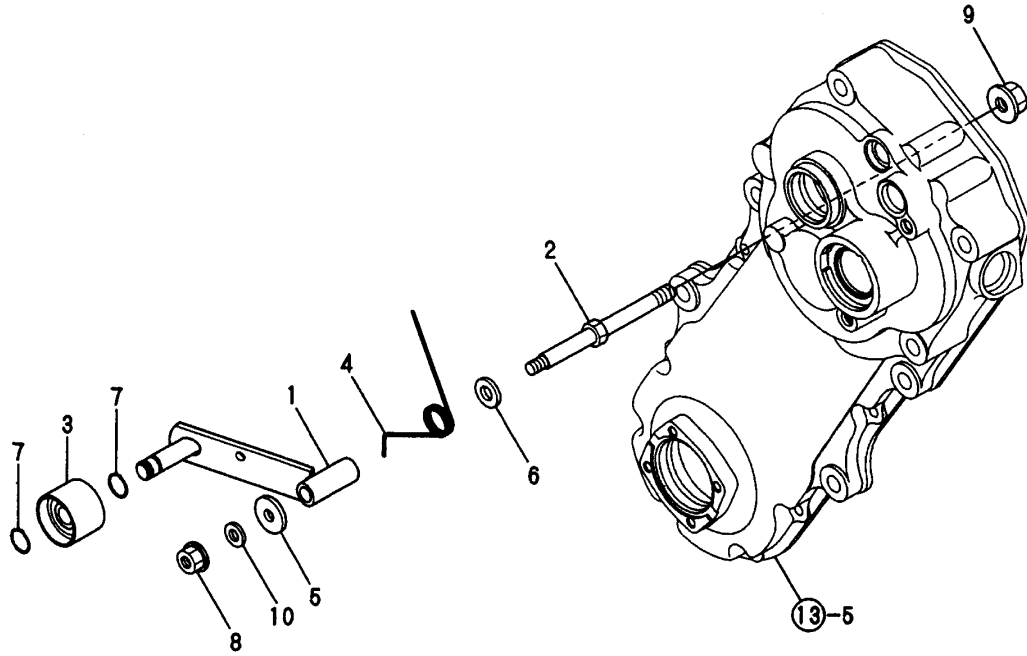
(D)=  
(E)=  
(F)=



| REF. | LEV. | PARTS NO.                  | DESCRIPTION         | QTY |     |     |     |     |     | I | R |
|------|------|----------------------------|---------------------|-----|-----|-----|-----|-----|-----|---|---|
|      |      |                            |                     | (A) | (B) | (C) | (D) | (E) | (F) |   |   |
| 1    | 1    | 1D1140-11420               | WASHER,PULLEY       | 1   |     |     |     |     |     |   |   |
| 2    | 1    | 1A2509-12000               | V-PULLEY 89B COMPL. | 1   |     |     |     |     |     |   |   |
| 3    | 1    | 1A2132-12200               | V-BELT SB35H        | 1   |     |     |     |     |     |   |   |
| 4    | 1    | 22217-080000               | SPRING WASHER 8     | 1   |     |     |     |     |     |   |   |
| 5    | 1    | 22512-050300               | KEY 5X 30           | 1   |     |     |     |     |     |   |   |
| 6    | 1    | 26117-080162               | BOLT M 8X 16 PLATED | 1   |     |     |     |     |     |   |   |
| 7    | 1    | 1A2321-13310               | V-PULLEY 160        | 1   |     |     |     |     |     |   |   |
| 7-1  | 1    | 1A2320-13300<br>(A=FXXXXX) | V-PULLEY 160        | 1   |     |     |     |     |     |   | N |
| 7-2  | 1    | 1A2320-13301<br>(A=FXXXXX) | V PULLEY            | 1   |     |     |     |     |     |   | N |
| 7-3  | 1    | 1A2740-13300<br>(A=FXXXXX) | V PULLEY            | 1   |     |     |     |     |     |   | N |
| 8    | 1    | 22157-060000               | WASHER 6            | 1   |     |     |     |     |     |   |   |
| 9    | 1    | 22217-060000               | SPRING WASHER 6     | 1   |     |     |     |     |     |   |   |
| 10   | 1    | 22512-050300               | KEY 5X 30           | 1   |     |     |     |     |     |   |   |
| 11   | 1    | 26117-060162               | BOLT M 6X 16 PLATED | 1   |     |     |     |     |     |   |   |

Fig.12. TENSION CLUTCH

12. TENSION CLUTCH



0CNP3-G85500 12. TENSION CLUTCH

(A)=TE600  
(B)=  
(C)=

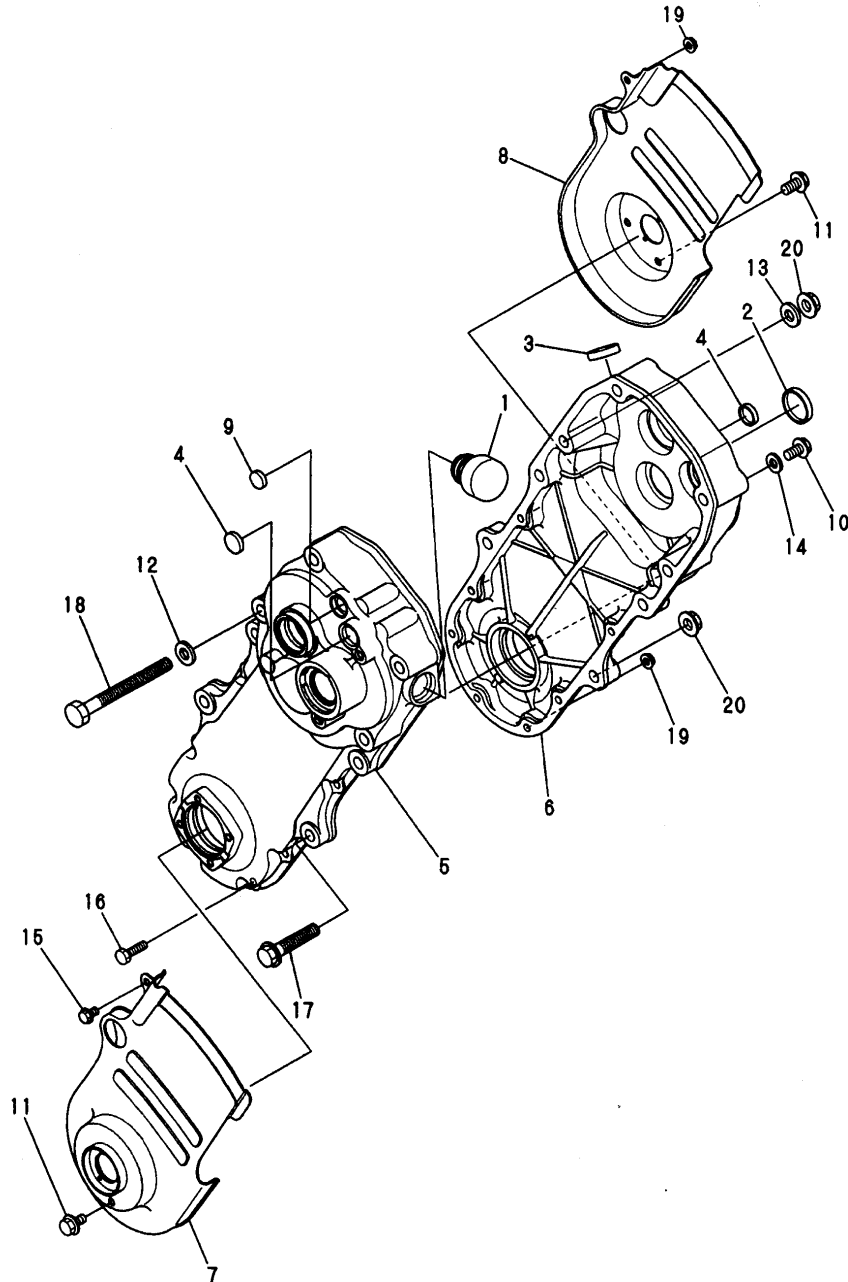
(D)=  
(E)=  
(F)=

| REF. | LEV. | PARTS NO.    | DESCRIPTION          | QTY |     |     |     |     |     | I | R |
|------|------|--------------|----------------------|-----|-----|-----|-----|-----|-----|---|---|
|      |      |              |                      | (A) | (B) | (C) | (D) | (E) | (F) |   |   |
| 1    | 1    | 1A2132-13001 | ARM COMP.,TENSION    | 1   |     |     |     |     |     |   |   |
| 2    | 1    | 1A2132-13061 | BOLT,TENSION         | 1   |     |     |     |     |     |   |   |
| 3    | 1    | 1A2320-13100 | ROLLER COMP.,TENSION | 1   |     |     |     |     |     |   |   |
| 4    | 1    | 1A2132-13190 | SPRING,TENSN RETURN  | 1   |     |     |     |     |     |   |   |
| 5    | 1    | 1D1140-11420 | WASHER,PULLEY        | 1   |     |     |     |     |     |   |   |
| 6    | 1    | 22137-100000 | WASHER 10,POLISHED   | 1   |     |     |     |     |     |   |   |
| 7    | 1    | 22242-000120 | CIRCLIP 12           | 2   |     |     |     |     |     |   |   |
| 8    | 1    | 26367-080002 | U-NUT M 8            | 1   |     |     |     |     |     |   |   |
| 9    | 1    | 26377-100002 | U-NUT M10            | 1   |     |     |     |     |     |   |   |
| 10   | 1    | 22137-080000 | WASHER 8, POLISHED   | 1   |     |     |     |     |     |   |   |



Fig.13. TRANSMISSION CASE

13. TRANSMISSION CASE



(A)=TE600

(B)=

(C)=

(D)=

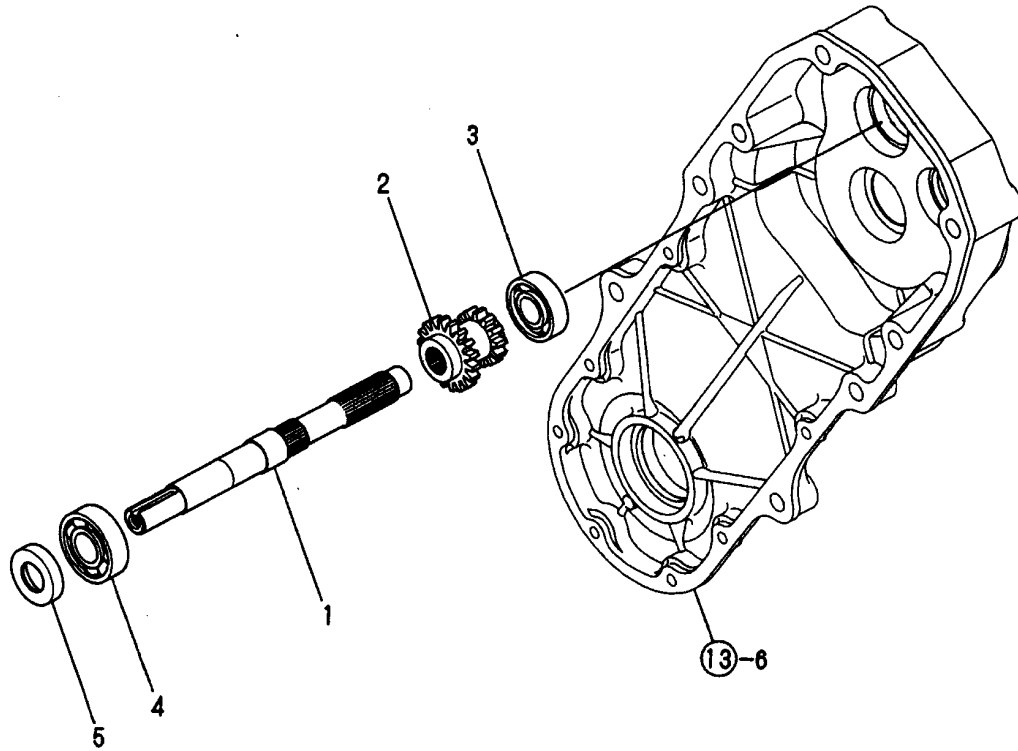
(E)=

(F)=

| REF. | LEV. | PARTS NO.    | DESCRIPTION          | Q'TY |     |     |     |     |     | I | R |
|------|------|--------------|----------------------|------|-----|-----|-----|-----|-----|---|---|
|      |      |              |                      | (A)  | (B) | (C) | (D) | (E) | (F) |   |   |
| 1    | 1    | 1A1470-20090 | CAP 35,OIL FILLER    | 1    |     |     |     |     |     |   |   |
| 2    | 1    | 1A1750-20410 | CAP 30X5,SEAL        | 1    |     |     |     |     |     |   |   |
| 3    | 1    | 1A1750-20421 | CAP 26X6,SEAL        | 1    |     |     |     |     |     |   |   |
| 4    | 1    | 1A1750-20431 | CAP 18X7,SEAL        | 2    |     |     |     |     |     |   |   |
| 5    | 1    | 1A2132-21040 | CASE L,TRANSMISSION  | 1    |     |     |     |     |     |   |   |
| 6    | 1    | 1A2132-21050 | CASE R,TRANSMISSION  | 1    |     |     |     |     |     |   |   |
| 7    | 1    | 1A2132-21070 | PROTECT COVER L COMP | 1    |     |     |     |     |     |   |   |
| 8    | 1    | 1A2132-21080 | PROTECT COVER R COMP | 1    |     |     |     |     |     |   |   |
| 9    | 1    | 1A2132-21150 | CAP 15X4,SEAL        | 1    |     |     |     |     |     |   |   |
| 10   | 1    | 1A2001-21250 | BOLT M8X12,COLLAR HD | 1    |     |     |     |     |     |   |   |
| 11   | 1    | 1A1750-90200 | SCREW 6X12,COLLAR HD | 2    |     |     |     |     |     |   |   |
| 12   | 1    | 22137-100000 | WASHER 10,POLISHED   | 1    |     |     |     |     |     |   |   |
| 13   | 1    | 22137-120000 | WASHER 12,POLISHED   | 1    |     |     |     |     |     |   |   |
| 14   | 1    | 23414-080000 | GASKET 8, ROUND      | 1    |     |     |     |     |     |   |   |
| 15   | 1    | 26107-060102 | BOLT M 6X 10 PLATED  | 1    |     |     |     |     |     |   |   |
| 16   | 1    | 26107-060222 | BOLT M 6X 22 PLATED  | 7    |     |     |     |     |     |   |   |
| 17   | 1    | 26137-100502 | BOLT M10X50,COLLAR   | 1    |     |     |     |     |     |   |   |
| 18   | 1    | 26157-101002 | BOLT M10X100 PLATED  | 1    |     |     |     |     |     |   |   |
| 19   | 1    | 26367-060002 | NUT M 6              | 8    |     |     |     |     |     |   |   |
| 20   | 1    | 26377-100002 | U-NUT M10            | 2    |     |     |     |     |     |   |   |

Fig.14. MAIN SHAFT

14. MAIN SHAFT



0CNP3-G85500 14. MAIN SHAFT

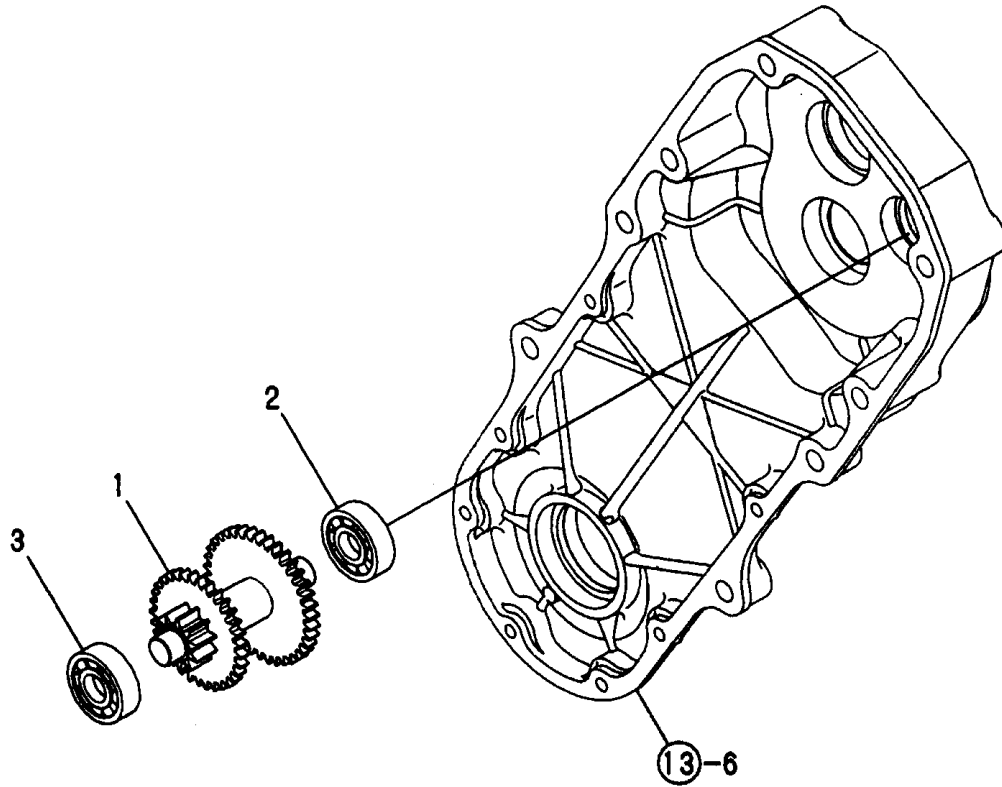
(A)=TE600  
(B)=  
(C)=

(D)=  
(E)=  
(F)=

| REF. | LEV. | PARTS NO.    | DESCRIPTION          | Q'TY |     |     |     |     |     | I | R |
|------|------|--------------|----------------------|------|-----|-----|-----|-----|-----|---|---|
|      |      |              |                      | (A)  | (B) | (C) | (D) | (E) | (F) |   |   |
| 1    | 1    | 1A2509-23010 | SHAFT,MAIN           | 1    |     |     |     |     |     |   |   |
| 2    | 1    | 1A2509-23020 | GEAR 18X13           | 1    |     |     |     |     |     |   |   |
| 3    | 1    | 24101-062024 | BALL BEARING         | 1    |     |     |     |     |     |   |   |
| 4    | 1    | 24101-062034 | BALL BEARING         | 1    |     |     |     |     |     |   |   |
| 5    | 1    | 24421-173007 | SEAL TC17 30 07, OIL | 1    |     |     |     |     |     |   |   |

Fig.15. COUNTER SHAFT

# 15. COUNTER SHAFT



N150205

## 0CNP3-G85500 15. COUNTER SHAFT

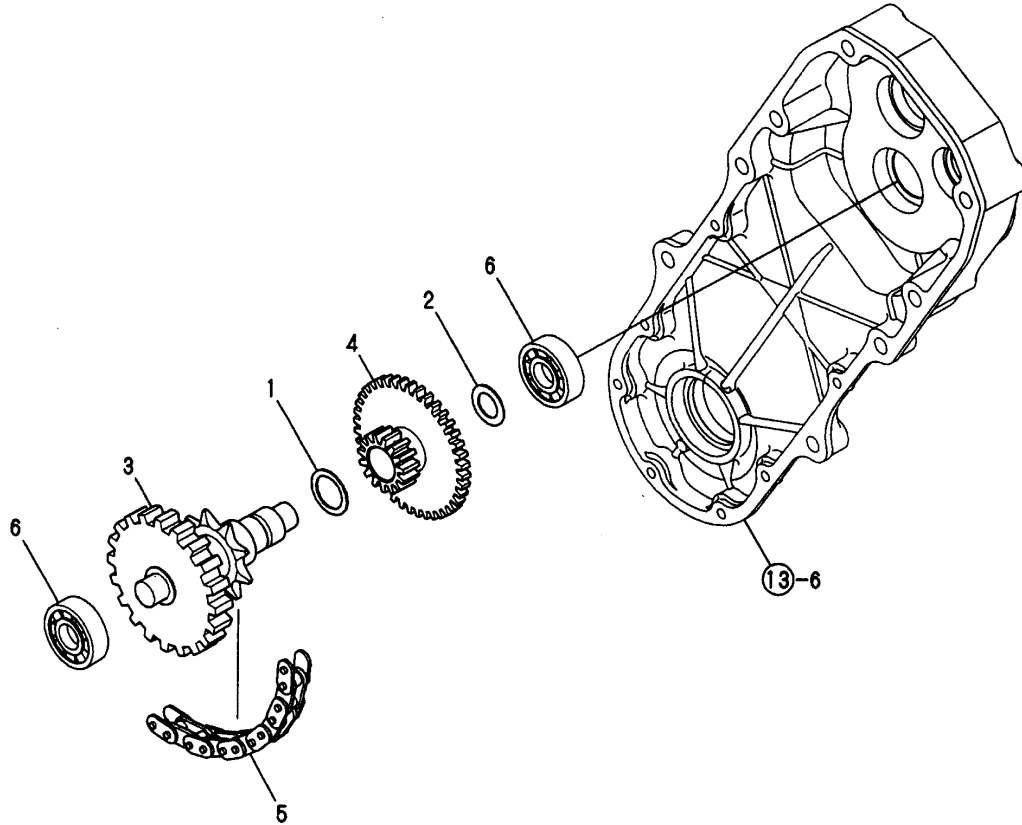
(A)=TE600  
(B)=  
(C)=

(D)=  
(E)=  
(F)=

| REF. | LEV. | PARTS NO.    | DESCRIPTION         | Q'TY |     |     |     |     |     | I | R |
|------|------|--------------|---------------------|------|-----|-----|-----|-----|-----|---|---|
|      |      |              |                     | (A)  | (B) | (C) | (D) | (E) | (F) |   |   |
| 1    | 1    | 1A2509-23100 | SHAFT COMP.,COUNTER | 1    |     |     |     |     |     |   |   |
| 2    | 1    | 24101-062034 | BALL BEARING        | 1    |     |     |     |     |     |   |   |
| 3    | 1    | 24101-063034 | BALL BEARING        | 1    |     |     |     |     |     |   |   |

# Fig.16. FINAL SHAFT

## 16. FINAL SHAFT



## 0CNP3-G85500 16. FINAL SHAFT

(A)=TE600

(B)=

(C)=

(D)=

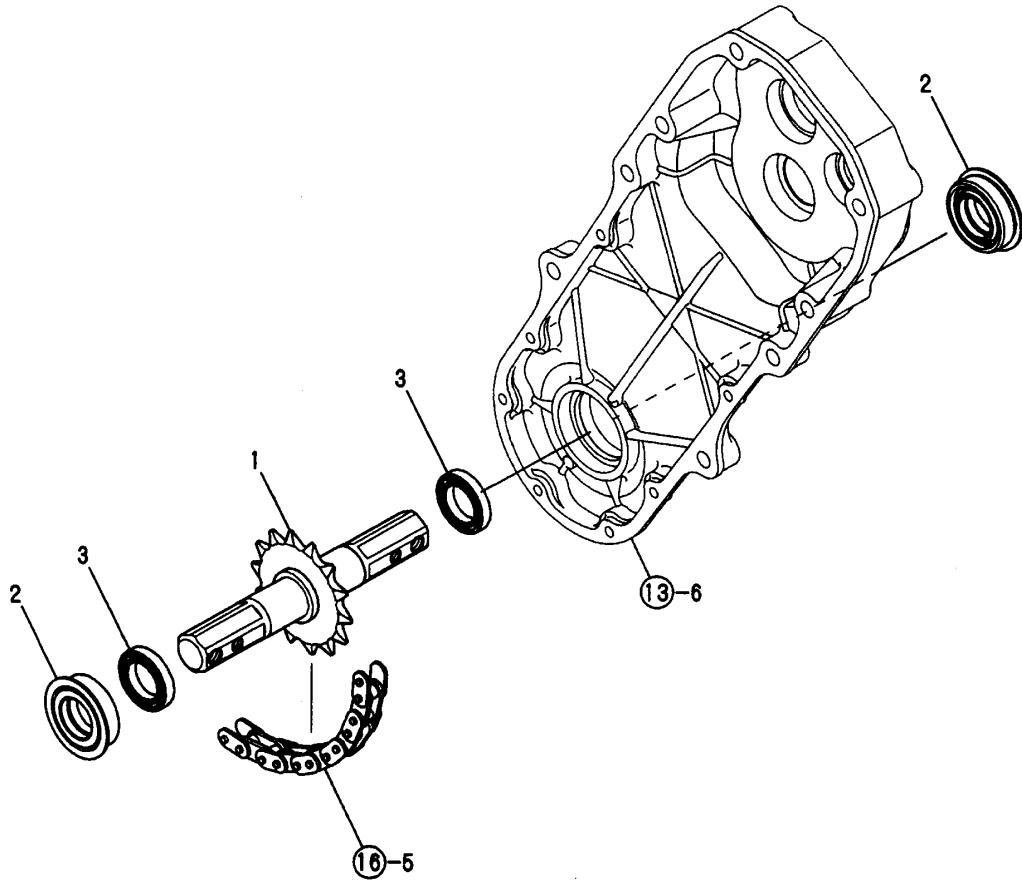
(E)=

(F)=

| REF. | LEV. | PARTS NO.    | DESCRIPTION          | QTY |     |     |     |     |     | I | R |
|------|------|--------------|----------------------|-----|-----|-----|-----|-----|-----|---|---|
|      |      |              |                      | (A) | (B) | (C) | (D) | (E) | (F) |   |   |
| 1    | 1    | 1A2190-23160 | LINER 20.2X27X1      | 1   |     |     |     |     |     |   |   |
| 2    | 1    | 1A1735-23250 | SPACER 15X24X1.0     | 1   |     |     |     |     |     |   |   |
| 3    | 1    | 1A2509-23300 | SHAFT COMP.,FINAL    | 1   |     |     |     |     |     |   |   |
| 4    | 1    | 1A2509-23350 | GEAR 40X15 COMPL.    | 1   |     |     |     |     |     |   |   |
| 5    | 1    | 1A2509-23400 | CHAIN 520HKX44,ROLLR | 1   |     |     |     |     |     |   |   |
| 6    | 1    | 24101-063024 | BALL BEARING         | 2   |     |     |     |     |     |   |   |

Fig.17. AXLE

17. AXLE



0CNP3-G85500 17. AXLE

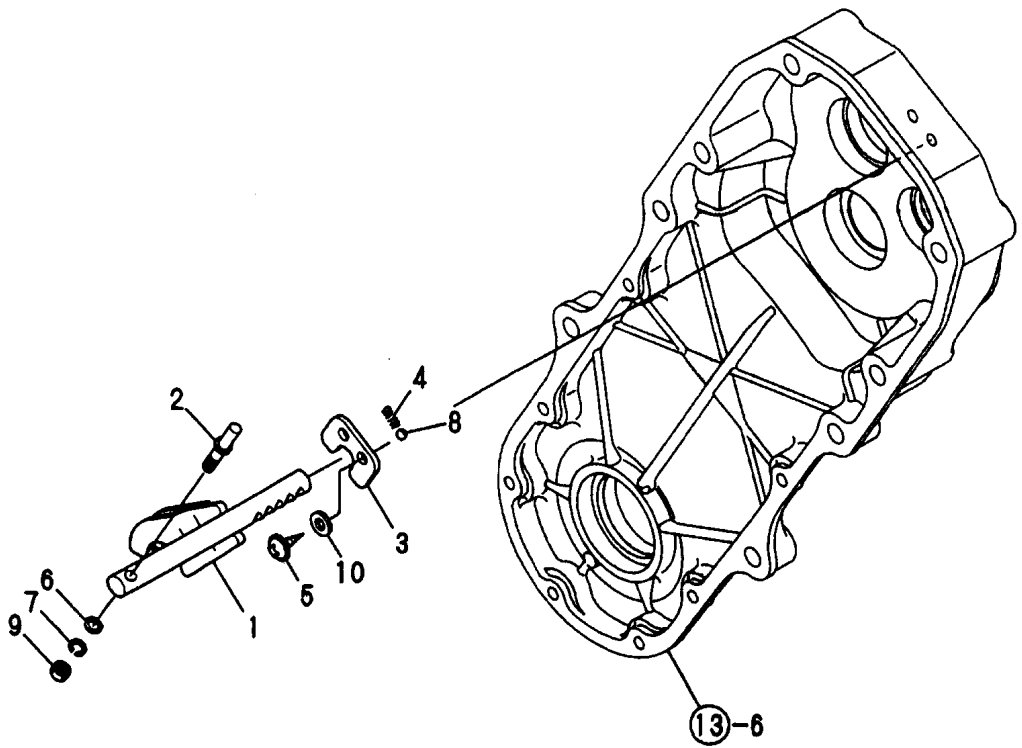
(A)=TE600  
(B)=  
(C)=

(D)=  
(E)=  
(F)=

| REF. | LEV. | PARTS NO.    | DESCRIPTION     | QTY |     |     |     |     |     | I | R |
|------|------|--------------|-----------------|-----|-----|-----|-----|-----|-----|---|---|
|      |      |              |                 | (A) | (B) | (C) | (D) | (E) | (F) |   |   |
| 1    | 1    | 1A2509-24000 | AXLE E COMPL.   | 1   |     |     |     |     |     |   |   |
| 2    | 1    | 1A2000-24600 | SEAL 254411,OIL | 2   |     |     |     |     |     |   |   |
| 3    | 1    | 24101-062054 | BEARING #6205   | 2   |     |     |     |     |     |   |   |

Fig.18. MAIN CHANGE

18. MAIN CHANGE



(A)=TE600

(B)=

(C)=

(D)=

(E)=

(F)=

| REF. | LEV. | PARTS NO.    | DESCRIPTION          | Q'TY |     |     |     |     |     | I | R |
|------|------|--------------|----------------------|------|-----|-----|-----|-----|-----|---|---|
|      |      |              |                      | (A)  | (B) | (C) | (D) | (E) | (F) |   |   |
| 1    | 1    | 1A2509-27000 | SHAFT COMP.,FORK     | 1    |     |     |     |     |     |   |   |
| 2    | 1    | 1A2132-27050 | PIN,CHANGE           | 1    |     |     |     |     |     |   |   |
| 3    | 1    | 1A2132-27100 | PLATE,BALL KEEP      | 1    |     |     |     |     |     |   |   |
| 4    | 1    | 1E6150-56040 | SPRING               | 1    |     |     |     |     |     |   |   |
| 5    | 1    | 1A1750-90200 | SCREW 6X12,COLLAR HD | 2    |     |     |     |     |     |   |   |
| 6    | 1    | 22137-060000 | WASHER 6, POLISHED   | 1    |     |     |     |     |     |   |   |
| 7    | 1    | 22217-060000 | SPRING WASHER 6      | 1    |     |     |     |     |     |   |   |
| 8    | 1    | 24190-100001 | BALL 5/16, STEEL     | 1    |     |     |     |     |     |   |   |
| 9    | 1    | 26717-060002 | NUT M 6              | 1    |     |     |     |     |     |   |   |
| 10   | 1    | 1A2132-27230 | WASHER               | 2    |     |     |     |     |     |   |   |

---

---

---

---

---

---

---

---

---

---

---

---

---

---

---

---

---

---

---

---

---

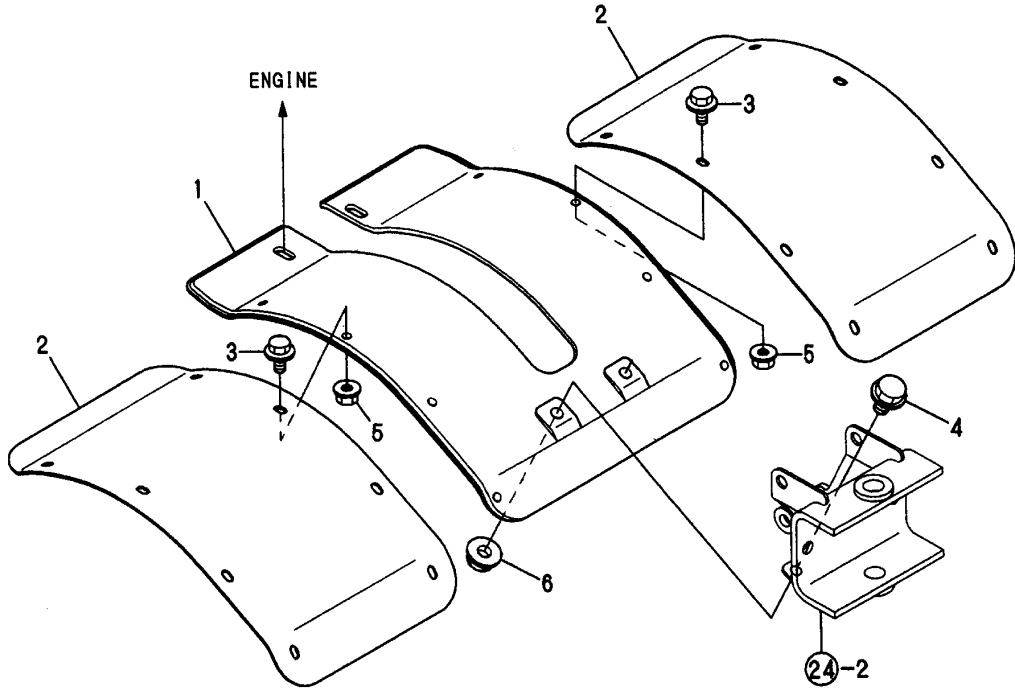
---

---

---

Fig.19. FENDER

19. FENDER



OCNP3-G85500 19. FENDER

(A)=TE600  
(B)=  
(C)=

(D)=  
(E)=  
(F)=

| REF. | LEV. | PARTS NO.    | DESCRIPTION         | QTY |     |     |     |     |     | I | R |
|------|------|--------------|---------------------|-----|-----|-----|-----|-----|-----|---|---|
|      |      |              |                     | (A) | (B) | (C) | (D) | (E) | (F) |   |   |
| 1    | 1    | 1A2132-32010 | FENDER              | 1   |     |     |     |     |     |   |   |
| 2    | 1    | 1A2132-32020 | FENDER,EXTENSION    | 2   |     |     |     |     |     |   |   |
| 3    | 1    | 26107-060122 | BOLT M 6X 12 PLATED | 8   |     |     |     |     |     |   |   |
| 4    | 1    | 26107-080142 | BOLT M 8X 14 PLATED | 2   |     |     |     |     |     |   |   |
| 5    | 1    | 26367-060002 | NUT M 6             | 8   |     |     |     |     |     |   |   |
| 6    | 1    | 26367-080002 | U-NUT M 8           | 2   |     |     |     |     |     |   |   |

---

---

---

---

---

---

---

---

---

---

---

---

---

---

---

---

---

---

---

---

---

---

---

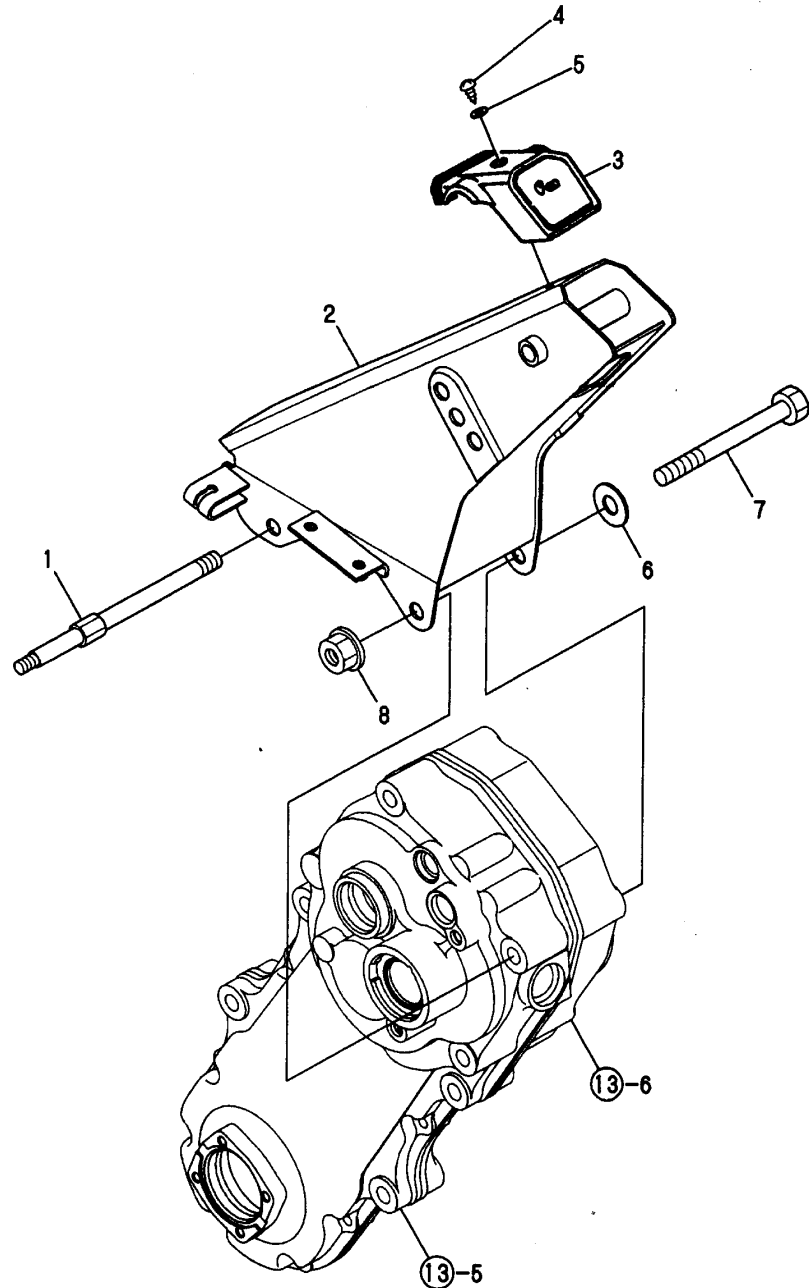
---

---

---

Fig.20. HANDLE COLUMN

20. HANDLE COLUMN



0CNP3-G85500 20. HANDLE COLUMN

(A)=TE600  
(B)=  
(C)=

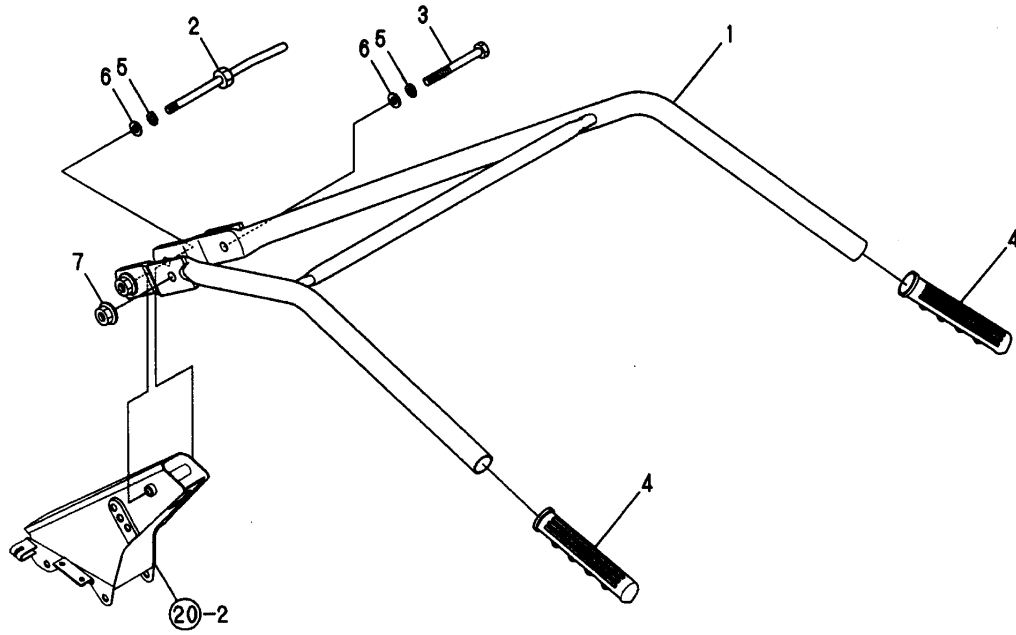
(D)=  
(E)=  
(F)=

| REF. | LEV. | PARTS NO.    | DESCRIPTION         | Q'TY |     |     |     |     |     | I | R |
|------|------|--------------|---------------------|------|-----|-----|-----|-----|-----|---|---|
|      |      |              |                     | (A)  | (B) | (C) | (D) | (E) | (F) |   |   |
| 1    | 1    | 1A2132-51090 | BOLT,HANDLE COLUMN  | 1    |     |     |     |     |     |   |   |
| 2    | 1    | 1A2132-51300 | FRAME COMP.,HANDLE  | 1    |     |     |     |     |     |   |   |
| 3    | 1    | 1A2130-51400 | COVER,HANDLE FRAME  | 1    |     |     |     |     |     |   |   |
| 4    | 1    | 1A1750-90050 | SCREW 5X10,TAPPING  | 1    |     |     |     |     |     |   |   |
| 5    | 1    | 1A1750-90150 | WASHER 5,PLAIN      | 1    |     |     |     |     |     |   |   |
| 6    | 1    | 22117-100000 | WASHER 10           | 1    |     |     |     |     |     |   |   |
| 7    | 1    | 26157-101002 | BOLT M10X100 PLATED | 1    |     |     |     |     |     |   |   |
| 8    | 1    | 26377-100002 | U-NUT M10           | 2    |     |     |     |     |     |   |   |



Fig.21. HANDLE

21. HANDLE



N150211

0CNP3-G85500 21. HANDLE

(A)=TE600  
(B)=  
(C)=

(D)=  
(E)=  
(F)=

| REF. | LEV. | PARTS NO.    | DESCRIPTION       | Q'TY |     |     |     |     |     | I | R |
|------|------|--------------|-------------------|------|-----|-----|-----|-----|-----|---|---|
|      |      |              |                   | (A)  | (B) | (C) | (D) | (E) | (F) |   |   |
| 1    | 1    | 1A2509-51500 | HANDLE E COMPL.   | 1    |     |     |     |     |     |   |   |
| 2    | 1    | 1A2132-51600 | BOLT COMP.,HANDLE | 1    |     |     |     |     |     |   |   |
| 3    | 1    | 1A2132-51640 | BOLT M10X125      | 1    |     |     |     |     |     |   |   |
| 4    | 1    | 192040-56220 | GRIP,HANDLE       | 2    |     |     |     |     |     |   |   |
| 5    | 1    | 22287-100000 | WASHER 10         | 2    |     |     |     |     |     |   |   |
| 6    | 1    | 22117-100000 | WASHER 10         | 2    |     |     |     |     |     |   |   |
| 7    | 1    | 26717-100002 | NUT M10           | 1    |     |     |     |     |     |   |   |

Fig.22. CONTROL LEVER

OCNP3-G85500 22. CONTROL LEVER

(A)=TE600

(B)=

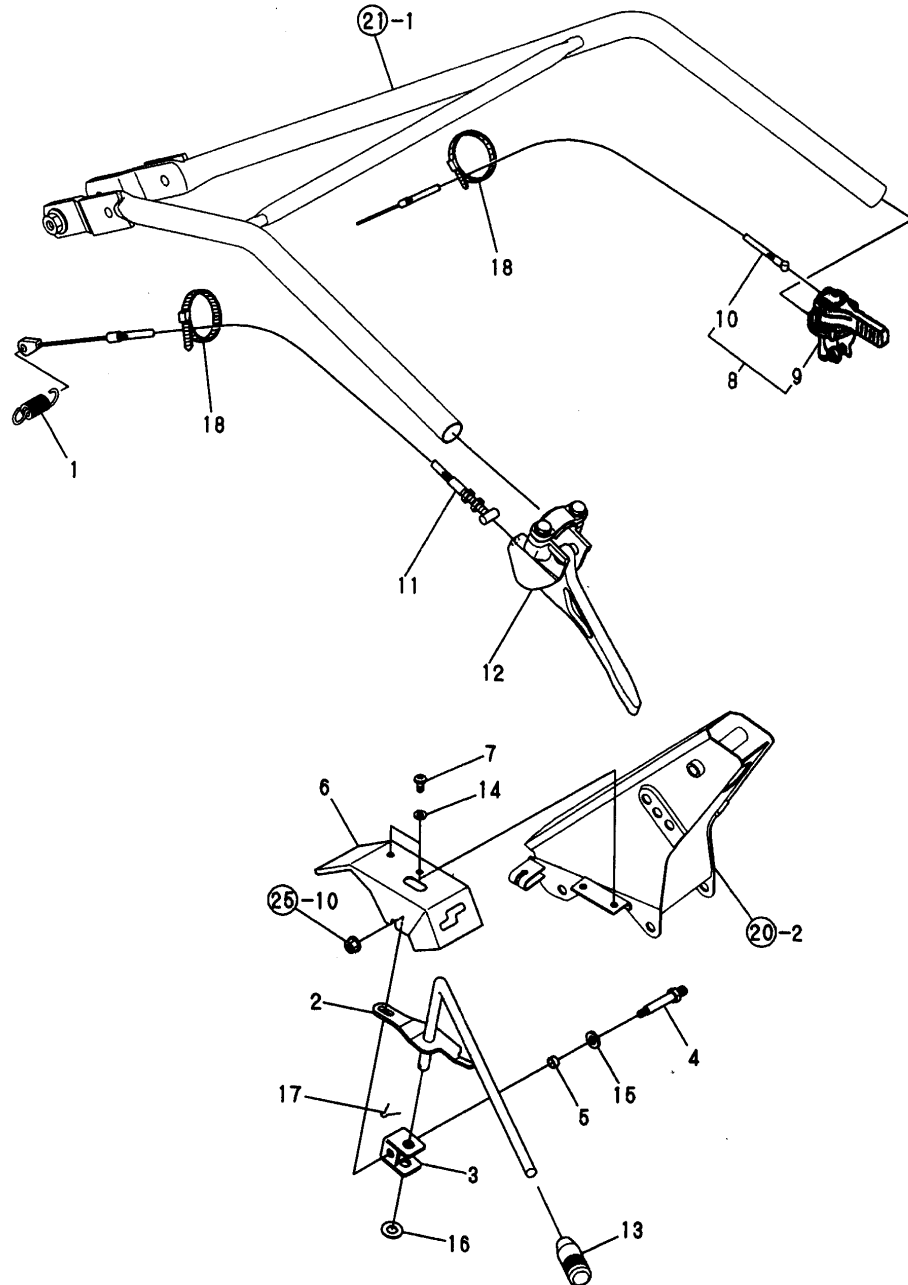
(C)=

(D)=

(E)=

(F)=

22. CONTROL LEVER



| REF. | LEV. | PARTS NO.    | DESCRIPTION          | QTY |     |     |     |     |     | I | R |
|------|------|--------------|----------------------|-----|-----|-----|-----|-----|-----|---|---|
|      |      |              |                      | (A) | (B) | (C) | (D) | (E) | (F) |   |   |
| 1    | 1    | 1A1105-16001 | SPRING,MN.CLTCH LVR. | 1   |     |     |     |     |     |   |   |
| 2    | 1    | 1A2132-55111 | LEVER COMP.,CHANGE   | 1   |     |     |     |     |     |   |   |
| 3    | 1    | 1A2132-55040 | FULCRUM,CHANGE       | 1   |     |     |     |     |     |   |   |
| 4    | 1    | 1A2132-55080 | PIN,CHANGE FULCRUM   | 1   |     |     |     |     |     |   |   |
| 5    | 1    | 1A2132-55090 | BUSH 8X8,COILED      | 1   |     |     |     |     |     |   |   |
| 6    | 1    | 1A2509-55210 | COVER,CHANGE         | 1   |     |     |     |     |     |   |   |
| 7    | 1    | 1A1735-55350 | SCREW 6X12,PAN HD.   | 2   |     |     |     |     |     |   |   |
| 8    | 1    | 1A2132-55500 | LEVER E ASSY.,ACCEL. | 1   |     |     |     |     |     |   |   |
| 9    | 2    | 1A2132-55510 | LEVER E,ACCELERATOR  | 1   |     |     |     |     |     |   |   |
| 10   | 2    | 1A2132-55520 | WIRE ACCELE          | 1   |     |     |     |     |     |   |   |
| 11   | 1    | 1A2132-55550 | WIRE,MAIN CLUTCH     | 1   |     |     |     |     |     |   |   |
| 12   | 1    | 1A2132-55610 | LEVER E,CLUTCH       | 1   |     |     |     |     |     |   |   |
| 13   | 1    | 1E6570-65750 | GRIP,CONT.LEVER BLK. | 1   |     |     |     |     |     |   |   |
| 14   | 1    | 1A1750-90120 | WASHER 6,SPRING BLK. | 2   |     |     |     |     |     |   |   |
| 15   | 1    | 22137-080000 | WASHER 8, POLISHED   | 1   |     |     |     |     |     |   |   |
| 16   | 1    | 22137-100000 | WASHER 10,POLISHED   | 1   |     |     |     |     |     |   |   |
| 17   | 1    | 22411-200200 | COTTER PIN 2.0X20    | 1   |     |     |     |     |     |   |   |
| 18   | 1    | 1A2320-55600 | BAND, CABLE          | 2   |     |     |     |     |     |   |   |

N150212

Fig.23. ENGINE FRAME

(A)=TE600  
(B)=  
(C)=

(D)=  
(E)=  
(F)=

23. ENGINE FRAME

| REF. | LEV. | PARTS NO.    | DESCRIPTION        | QTY |     |     |     |     |     | I | R |  |
|------|------|--------------|--------------------|-----|-----|-----|-----|-----|-----|---|---|--|
|      |      |              |                    | (A) | (B) | (C) | (D) | (E) | (F) |   |   |  |
| 1    | 1    | 1A2509-61000 | FRAME COMP.,ENGINE | 1   |     |     |     |     |     |   |   |  |
| 2    | 1    | 26137-100502 | BOLT M10X50,COLLAR | 1   |     |     |     |     |     |   |   |  |
| 3    | 1    | 26377-100002 | U-NUT M10          | 1   |     |     |     |     |     |   |   |  |

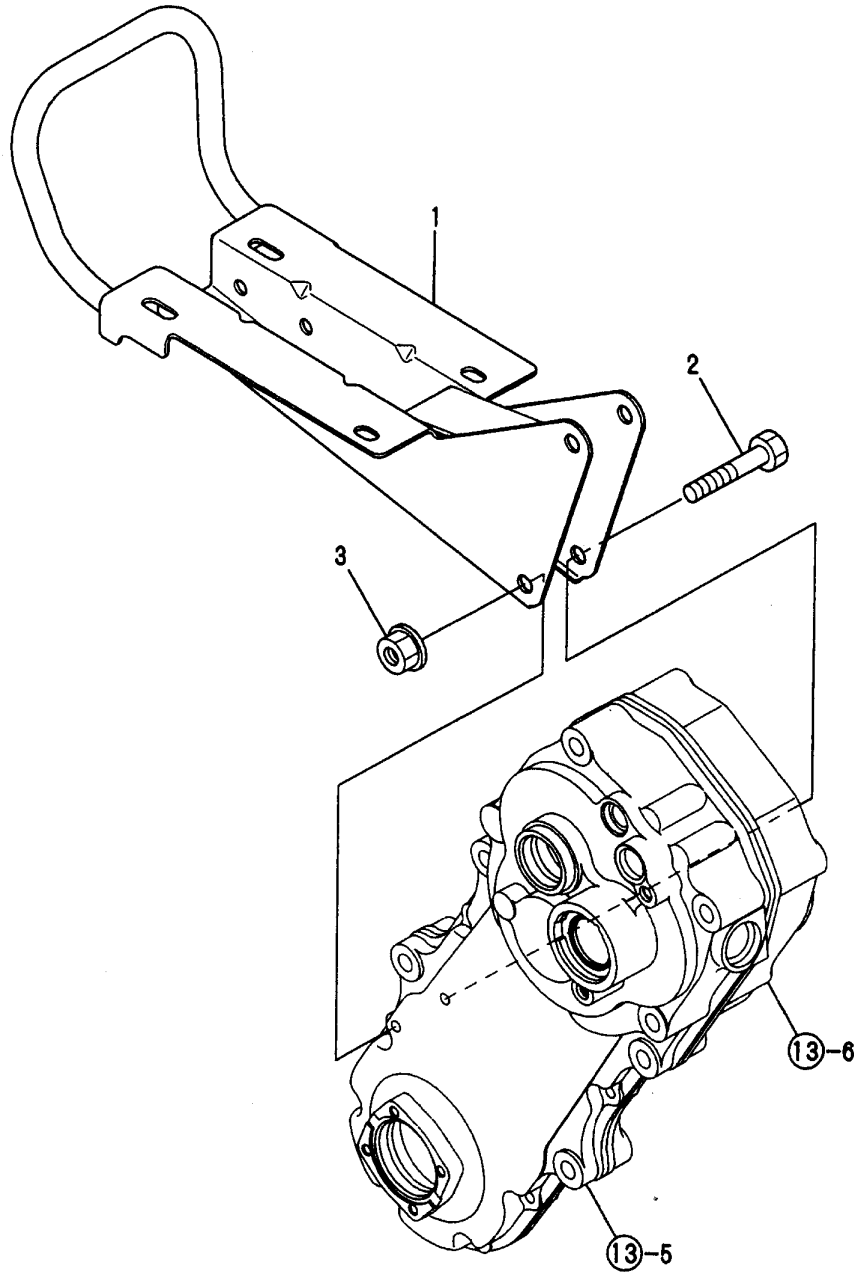
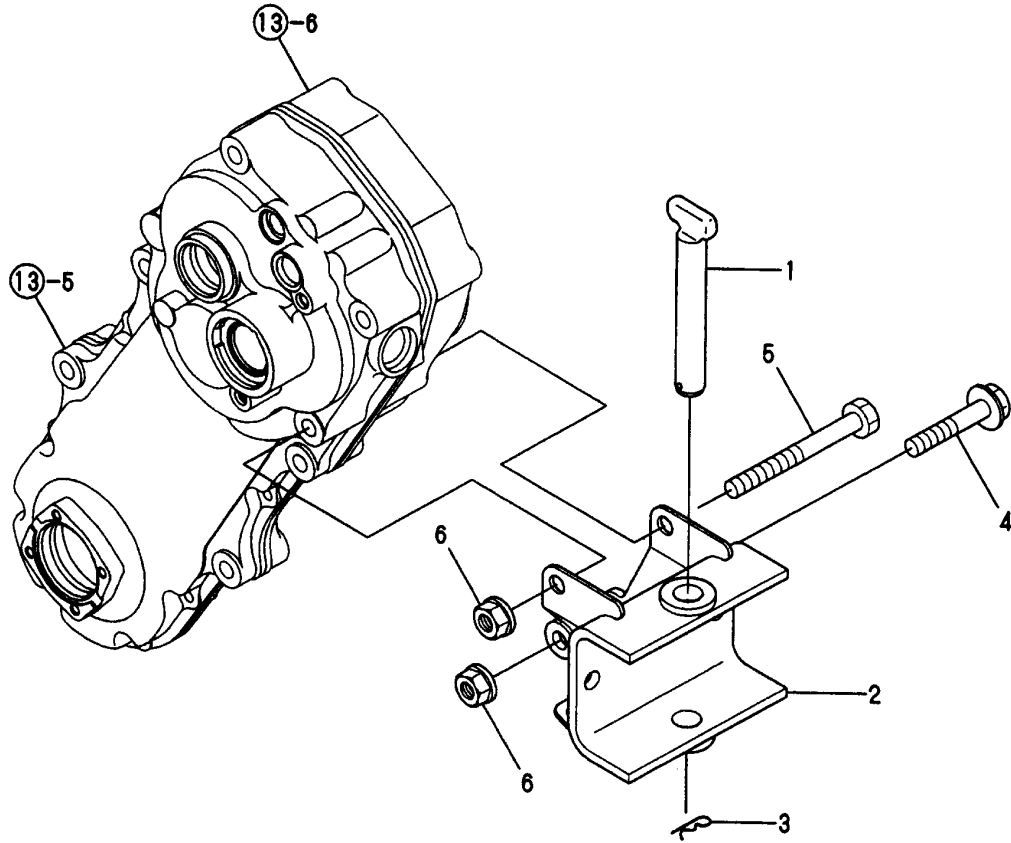


Fig.24. REAR HITCH

24. REAR HITCH



0CNP3-G85500 24. REAR HITCH

(A)=TE600  
(B)=  
(C)=

(D)=  
(E)=  
(F)=

| REF. | LEV. | PARTS NO.    | DESCRIPTION        | QTY |     |     |     |     |     | I | R |
|------|------|--------------|--------------------|-----|-----|-----|-----|-----|-----|---|---|
|      |      |              |                    | (A) | (B) | (C) | (D) | (E) | (F) |   |   |
| 1    | 1    | 1A2132-61260 | PIN,HITCH          | 1   |     |     |     |     |     |   |   |
| 2    | 1    | 1A2509-61500 | HITCH COMPL.       | 1   |     |     |     |     |     |   |   |
| 3    | 1    | 22360-160000 | SNAP PIN 16        | 1   |     |     |     |     |     |   |   |
| 4    | 1    | 26137-100552 | BOLT M10X55,COLLAR | 1   |     |     |     |     |     |   |   |
| 5    | 1    | 26156-100952 | BOLT 10X95         | 1   |     |     |     |     |     |   |   |
| 6    | 1    | 26377-100002 | U-NUT M10          | 2   |     |     |     |     |     |   |   |

Fig.25. BELT COVER

(A)=TE600

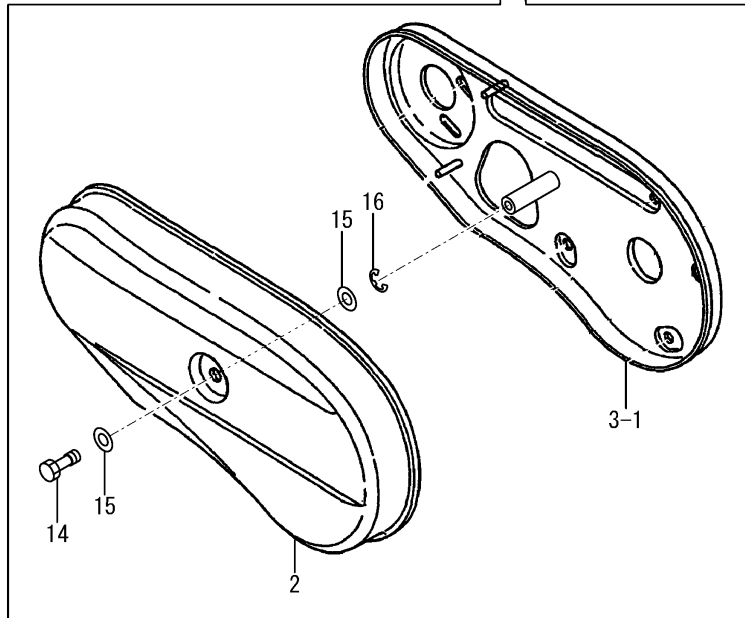
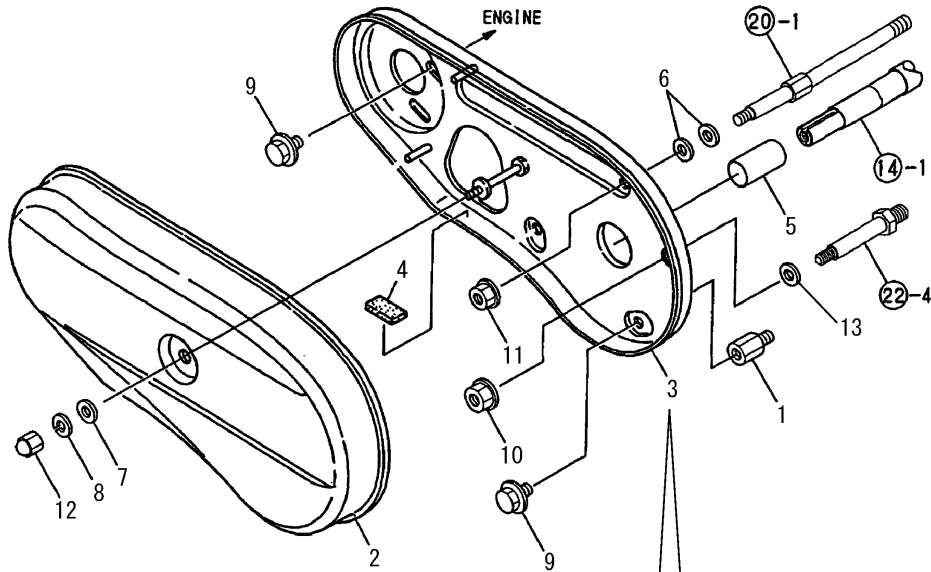
(B)=

(C)=

(D)=

(E)=

(F)=



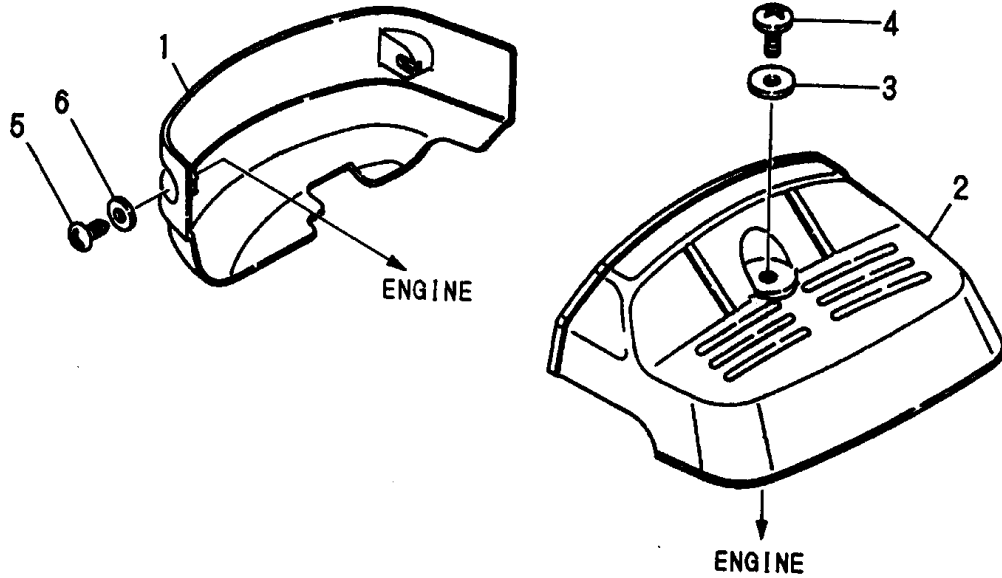
| REF. | LEV. | PARTS NO.    | DESCRIPTION          | QTY |     |     |     |     |     | I | R |
|------|------|--------------|----------------------|-----|-----|-----|-----|-----|-----|---|---|
|      |      |              |                      | (A) | (B) | (C) | (D) | (E) | (F) |   |   |
| 1    | 1    | 1A1490-10340 | STUD 22.5,BACK COVER | 1   |     |     |     |     |     |   |   |
| 2    | 1    | 1A2132-62010 | COVER,BELT           | 1   |     |     |     |     |     |   |   |
| 3    | 1    | 1A2132-62100 | COVER COMP.,BACK     | 1   |     |     |     |     |     |   |   |
| 3-1  | 1    | 1A2132-62200 | COVER COMP.,BACK     | 1   |     |     |     |     |     |   | N |
|      |      | (A=FZZZZZ)   |                      |     |     |     |     |     |     |   |   |
| 4    | 1    | 1A2000-62481 | CUSHION              | 1   |     |     |     |     |     |   |   |
| 5    | 1    | 1A2132-62400 | GUARD,MAIN SHAFT     | 1   |     |     |     |     |     |   |   |
| 6    | 1    | 22137-080000 | WASHER 8, POLISHED   | 2   |     |     |     |     |     |   |   |
| 7    | 1    | 22157-080000 | WASHER 8             | 1   |     |     |     |     |     |   | Z |
|      |      | (A=FZZZZZ)   |                      |     |     |     |     |     |     |   |   |
| 8    | 1    | 22217-080000 | SPRING WASHER 8      | 1   |     |     |     |     |     |   | Z |
|      |      | (A=FZZZZZ)   |                      |     |     |     |     |     |     |   |   |
| 9    | 1    | 26107-080122 | BOLT M 8X 12 PLATED  | 3   |     |     |     |     |     |   |   |
| 10   | 1    | 26367-060002 | NUT M 6              | 1   |     |     |     |     |     |   |   |
| 11   | 1    | 26367-080002 | U-NUT M 8            | 1   |     |     |     |     |     |   |   |
| 12   | 1    | 26668-080002 | CAP NUT M 8          | 1   |     |     |     |     |     |   | Z |
|      |      | (A=FZZZZZ)   |                      |     |     |     |     |     |     |   |   |
| 13   | 1    | 1A2132-27230 | WASHER               | 1   |     |     |     |     |     |   | W |
|      |      | (A=FZZZZZ)   |                      |     |     |     |     |     |     |   |   |
| 14   | 1    | 1A2132-62050 | BOLT                 | 1   |     |     |     |     |     |   | W |
|      |      | (A=FZZZZZ)   |                      |     |     |     |     |     |     |   |   |
| 15   | 1    | 22137-080000 | WASHER 8, POLISHED   | 2   |     |     |     |     |     |   | W |
|      |      | (A=FZZZZZ)   |                      |     |     |     |     |     |     |   |   |
| 16   | 1    | 22272-000060 | CIRCLIP E- 6         | 1   |     |     |     |     |     |   | W |
|      |      | (A=FZZZZZ)   |                      |     |     |     |     |     |     |   |   |

Remarks

(1)INTERCHANGEABLE BY SIMULTANEOUS REPLACEMENT WITH REF.14,15 & 16.

Fig.26. BONNET

26. BONNET



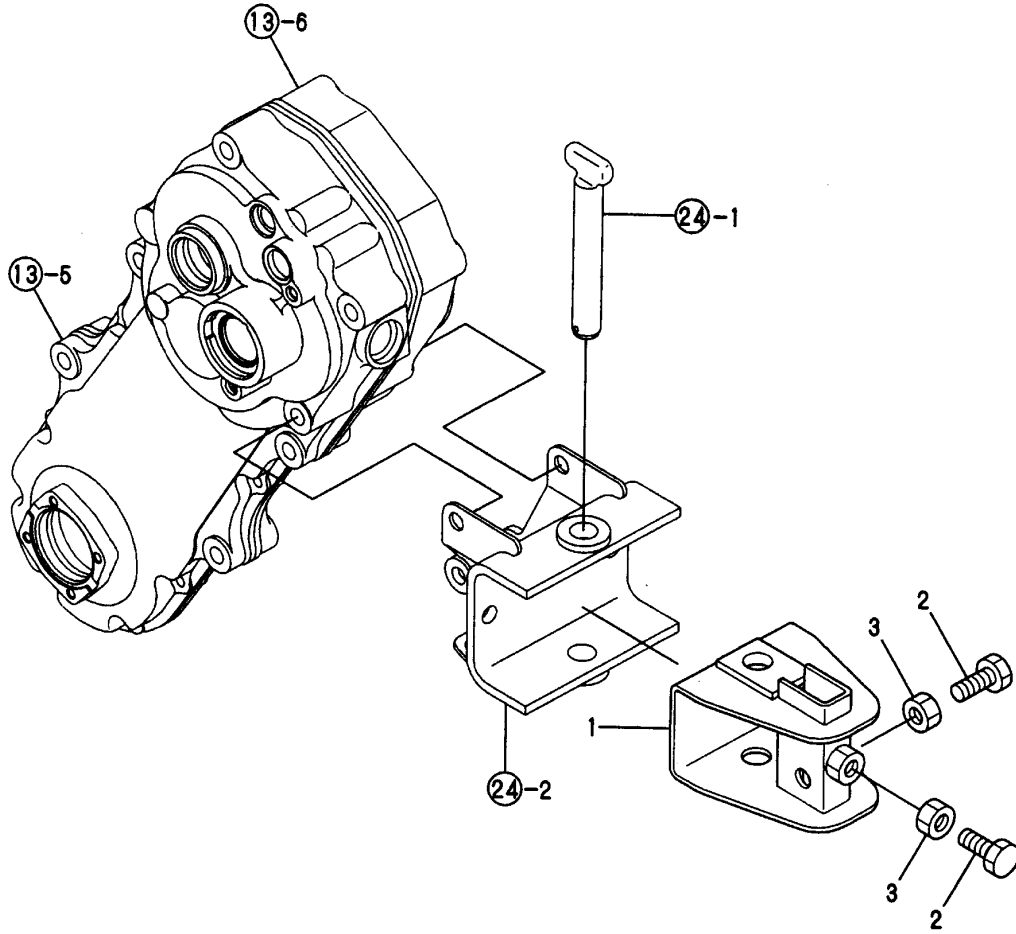
(A)=TE600  
(B)=  
(C)=

(D)=  
(E)=  
(F)=

| REF. | LEV. | PARTS NO.    | DESCRIPTION        | Q'TY |     |     |     |     |     | I | R |
|------|------|--------------|--------------------|------|-----|-----|-----|-----|-----|---|---|
|      |      |              |                    | (A)  | (B) | (C) | (D) | (E) | (F) |   |   |
| 1    | 1    | 1A2172-64100 | MASK,FRONT         | 1    |     |     |     |     |     |   |   |
| 2    | 1    | 1A2019-64200 | COVER 55,REAR      | 1    |     |     |     |     |     |   |   |
| 3    | 1    | 1A2000-64210 | WASHER 6X19X1.0    | 1    |     |     |     |     |     |   |   |
| 4    | 1    | 1A2000-64220 | SCREW 6X16         | 1    |     |     |     |     |     |   |   |
| 5    | 1    | 1A1750-90050 | SCREW 5X10,TAPPING | 2    |     |     |     |     |     |   |   |
| 6    | 1    | 1A1750-90150 | WASHER 5,PLAIN     | 2    |     |     |     |     |     |   |   |

Fig.27. UNIVERSAL HITCH

27. UNIVERSAL HITCH



0CNP3-G85500 27. UNIVERSAL HITCH

(A)=TE600

(B)=

(C)=

(D)=

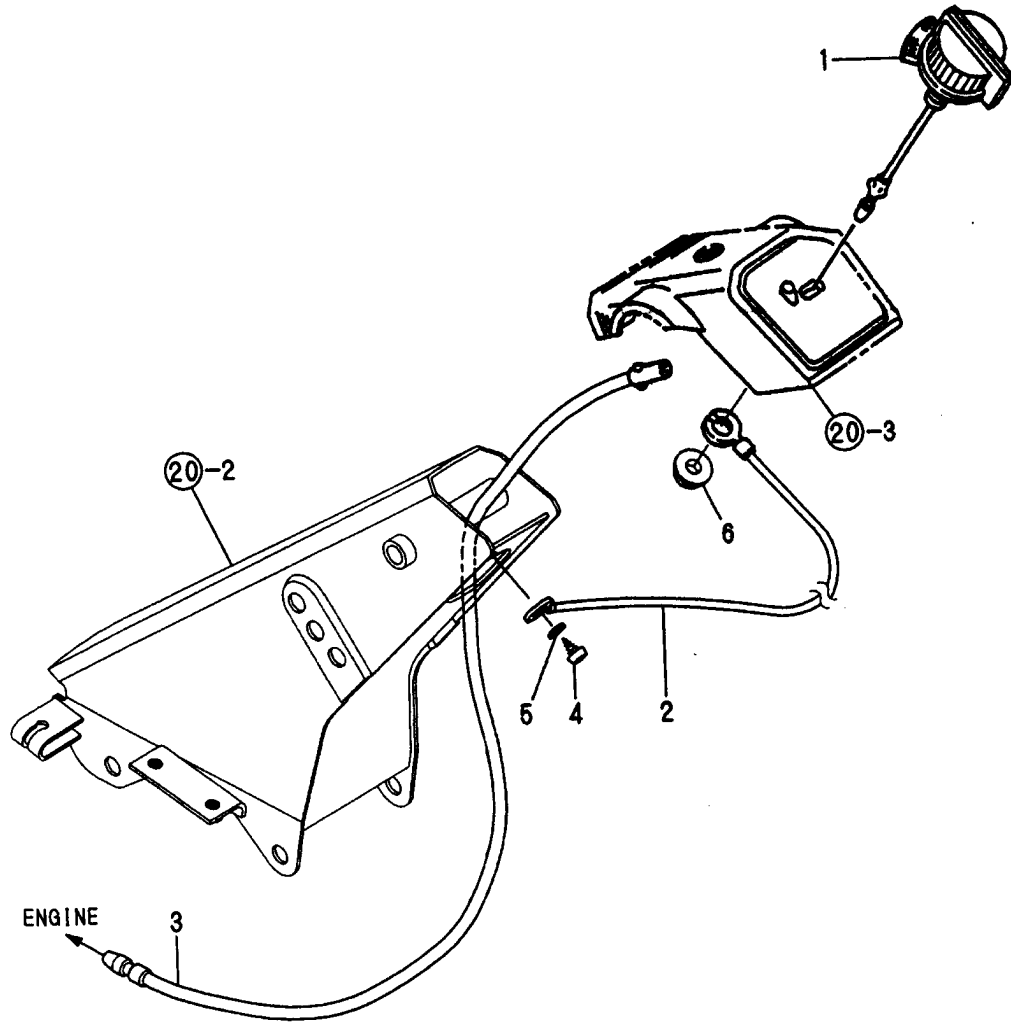
(E)=

(F)=

| REF. | LEV. | PARTS NO.    | DESCRIPTION          | Q'TY |     |     |     |     |     | I | R |  |
|------|------|--------------|----------------------|------|-----|-----|-----|-----|-----|---|---|--|
|      |      |              |                      | (A)  | (B) | (C) | (D) | (E) | (F) |   |   |  |
| 1    | 1    | 1A2132-75500 | HITCH CMP.,UNIVERSAL | 1    |     |     |     |     |     |   |   |  |
| 2    | 1    | 26117-100302 | BOLT M10X 30         | 2    |     |     |     |     |     |   |   |  |
| 3    | 1    | 26717-100002 | NUT M10              | 2    |     |     |     |     |     |   |   |  |

Fig.28. ELECTRICAL PARTS

28. ELECTRICAL PARTS



0CNP3-G85500 28. ELECTRICAL PARTS

(A)=TE600  
(B)=  
(C)=

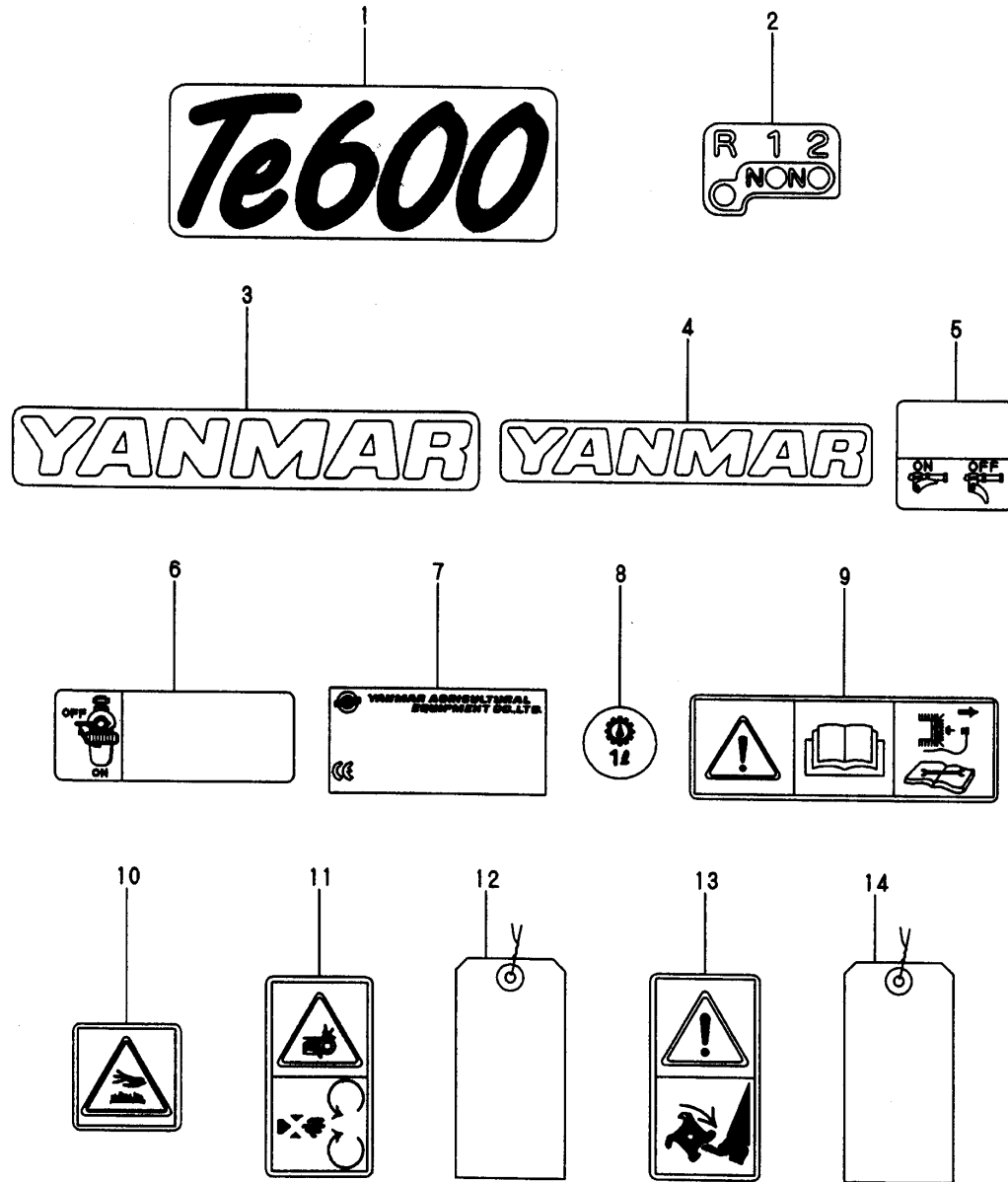
(D)=  
(E)=  
(F)=

| REF. | LEV. | PARTS NO.    | DESCRIPTION        | Q'TY |     |     |     |     |     | I | R |
|------|------|--------------|--------------------|------|-----|-----|-----|-----|-----|---|---|
|      |      |              |                    | (A)  | (B) | (C) | (D) | (E) | (F) |   |   |
| 1    | 1    | 1A1750-40800 | SWITCH,STOP        | 1    |     |     |     |     |     |   |   |
| 2    | 1    | 1A1750-40850 | CORD,EARTH         | 1    |     |     |     |     |     |   |   |
| 3    | 1    | 1A2000-83100 | CORD,STOP SWITCH   | 1    |     |     |     |     |     |   |   |
| 4    | 1    | 1A1750-90050 | SCREW 5X10,TAPPING | 1    |     |     |     |     |     |   |   |
| 5    | 1    | 1A1750-90150 | WASHER 5,PLAIN     | 1    |     |     |     |     |     |   |   |
| 6    | 1    | 26367-080002 | U-NUT M 8          | 1    |     |     |     |     |     |   |   |



Fig.29. LABELS

29. LABELS



(A)=TE600

(B)=

(C)=

(D)=

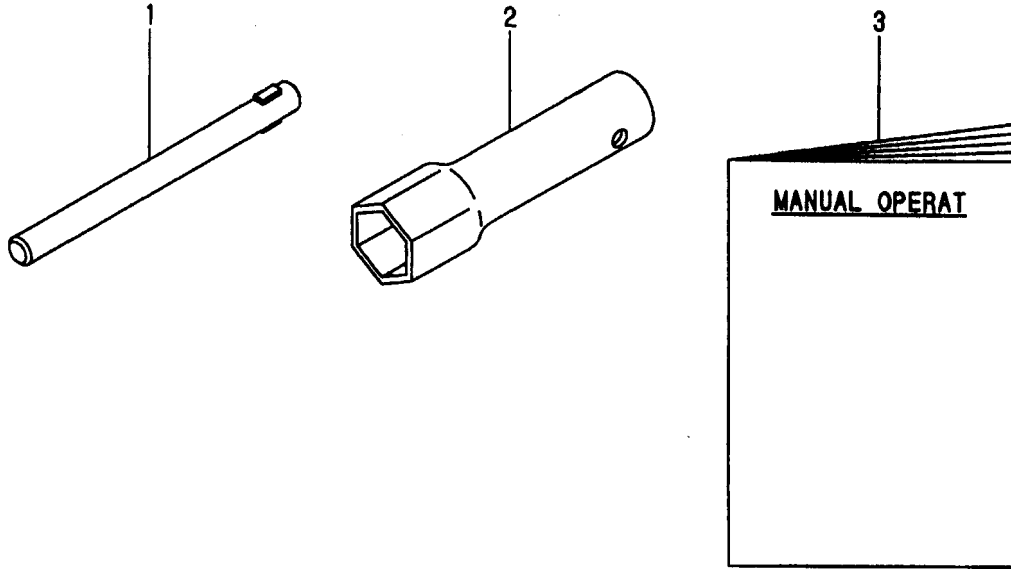
(E)=

(F)=

| REF. | LEV. | PARTS NO.    | DESCRIPTION          | QTY |     |     |     |     |     | I | R |
|------|------|--------------|----------------------|-----|-----|-----|-----|-----|-----|---|---|
|      |      |              |                      | (A) | (B) | (C) | (D) | (E) | (F) |   |   |
| 1    | 1    | 1A2509-86000 | LABEL,MODEL          | 1   |     |     |     |     |     |   |   |
| 2    | 1    | 1A2132-86070 | MARK,TRAVEL CHANGE   | 1   |     |     |     |     |     |   |   |
| 3    | 1    | 1A2150-86080 | LABEL,FRONT MASK     | 1   |     |     |     |     |     |   |   |
| 4    | 1    | 1A2130-86320 | LABEL,FUEL TANK      | 1   |     |     |     |     |     |   |   |
| 5    | 1    | 1A2099-86340 | LABEL,MAIN CLUTCH    | 1   |     |     |     |     |     |   |   |
| 6    | 1    | 1A2099-86360 | LABEL,FUEL COCK      | 1   |     |     |     |     |     |   |   |
| 7    | 1    | 1A2179-86550 | LABEL,MACHINE BODY   | 1   |     |     |     |     |     |   |   |
| 8    | 1    | 1A2138-86701 | LABEL 1,OIL          | 1   |     |     |     |     |     |   |   |
| 9    | 1    | 1A2199-86700 | MARK,HANDLING CAUTN  | 1   |     |     |     |     |     |   |   |
| 10   | 1    | 1A2199-86720 | MARK,HI-TEMP.CAUTION | 1   |     |     |     |     |     |   |   |
| 11   | 1    | 1A2199-86840 | MARK,BELT CVR.CAUTN  | 1   |     |     |     |     |     |   |   |
| 12   | 1    | 1A2099-86900 | LABEL,OIL CAUTION    | 1   |     |     |     |     |     |   |   |
| 13   | 1    | 1A2199-86900 | MARK,ROTARY CAUTION  | 1   |     |     |     |     |     |   |   |
| 14   | 1    | 1A2099-86910 | LID,HANDLE COVER     | 1   |     |     |     |     |     |   |   |

Fig.30. TOOLS & ACCESSORIES

30. TOOLS & ACCESSORIES



0CNP3-G85500 30. TOOLS & ACCESSORIES

(A)=TE600  
(B)=  
(C)=

(D)=  
(E)=  
(F)=

| REF. | LEV. | PARTS NO.                  | DESCRIPTION      | Q'TY |     |     |     |     |     | I | R |
|------|------|----------------------------|------------------|------|-----|-----|-----|-----|-----|---|---|
|      |      |                            |                  | (A)  | (B) | (C) | (D) | (E) | (F) |   |   |
| 1    | 1    | 1A2320-87000               | BAR,WRENCH       | 1    |     |     |     |     |     |   |   |
| 2    | 1    | 160110-92700               | BOX, SPANNER     | 1    |     |     |     |     |     |   |   |
| 3    | 1    | 1A2132-88050               | MANUAL,OPERATION | 1    |     |     |     |     |     |   |   |
| 3-1  | 1    | 1A2132-88051<br>(A=FZZZZZ) | MANUAL           | 1    |     |     |     |     |     |   | N |

## Part Number Index

All parts are stipulated in the order of part numbers.

(Depending on the area in which the part is used.)

This index will display the location of the part according to each part number.

## PARTS No. INDEX

| PARTS No.    | Fig. | Ref.No. |
|--------------|------|---------|
| 104200-59170 | 1    | 7       |
|              |      | 16      |
| 106990-44660 | 6    | 24      |
| 114250-14400 | 5    | 12      |
| 114250-45310 | 6    | 1       |
| 114252-13950 | 4    | 14      |
| 114270-01600 | 1    | 5       |
| 114299-01760 | 1    | 19      |
| 114299-01950 | 1    | 21      |
| 114770-61600 | 8    | 35      |
| 124060-77680 | 6    | 28      |
| 160110-01870 | 1    | 22      |
| 160110-92700 | 30   | 2       |
| 160120-76940 | 8    | 9       |
| 160310-56980 | 7    | 14      |
| 160310-56990 | 7    | 15      |
| 160393-55050 | 6    | 11      |
| 160490-14200 | 5    | 11      |
| 160520-66291 | 8    | 22      |
| 160590-21210 | 5    | 18      |
| 160592-56540 | 7    | 2       |
| 160592-76510 | 9    | 3       |
| 160598-56660 | 7    | 20      |
| 160610-01690 | 1    | 6       |
|              |      | 15      |
| 160610-04201 | 2    | 4       |
| 160610-04910 | 5    | 13      |
| 160610-55100 | 6    | 12      |
| 160610-56151 | 4    | 11      |
|              | 7    | 32      |
| 160610-56610 | 7    | 19      |
| 160610-56630 | 7    | 12      |
| 160640-56850 | 7    | 26      |
| 160664-66220 | 8    | 25      |
| 160667-56750 | 7    | 27      |
| 160670-66350 | 8    | 26      |
| 160690-01330 | 2    | 3       |
| 160690-02220 | 1    | 8       |
|              |      | 13      |
| 160690-03050 | 2    | 1       |
| 160690-07260 | 3    | 3       |
| 160690-11010 | 2    | 5       |
| 160690-11100 | 2    | 10      |
| 160690-11110 | 2    | 11      |
| 160690-11120 | 2    | 12      |
| 160690-11180 | 2    | 13      |
| 160690-11200 | 2    | 14      |
| 160690-11221 | 2    | 15      |
| 160690-11271 | 2    | 16      |
| 160690-11280 | 2    | 17      |

| PARTS No.    | Fig. | Ref.No. |
|--------------|------|---------|
| 160690-11290 | 2    | 18      |
| 160690-11300 | 2    | 20      |
| 160690-11310 | 2    | 21      |
| 160690-12261 | 4    | 2       |
| 160690-13200 | 4    | 13      |
| 160690-14571 | 5    | 9       |
| 160690-21201 | 5    | 17      |
| 160690-22011 | 5    | 21      |
| 160690-22300 | 5    | 27      |
| 160690-55140 | 6    | 23      |
| 160690-55461 | 6    | 21      |
| 160690-56160 | 7    | 33      |
| 160690-56560 | 7    | 3       |
| 160690-56570 | 7    | 4       |
| 160690-59400 | 6    | 27      |
| 160690-61301 | 8    | 2       |
| 160690-61311 | 8    | 3       |
| 160690-61450 | 8    | 4       |
| 160690-61600 | 8    | 5       |
| 160690-66011 | 8    | 11      |
| 160690-66111 | 8    | 18      |
| 160690-66143 | 8    | 19      |
| 160690-66180 | 8    | 29      |
| 160690-66200 | 8    | 32      |
| 160690-66210 | 8    | 33      |
| 160690-76521 | 9    | 4       |
| 160690-76531 | 9    | 6       |
| 160690-76540 | 9    | 7       |
| 160690-76561 | 9    | 8       |
| 160690-76570 | 9    | 13      |
| 160690-76591 | 9    | 15      |
| 160690-76620 | 9    | 11      |
| 160690-76631 | 9    | 10      |
| 160690-76801 | 9    | 5       |
| 160690-76830 | 9    | 12      |
| 160690-78083 | 9    | 18      |
| 160690-78230 | 9    | 20      |
| 160690-78532 | 9    | 19      |
| 160690-78542 | 9    | 21      |
| 160692-04310 | 4    | 1       |
| 160692-07370 | 3    | 4       |
| 160692-12500 | 4    | 3       |
| 160692-12510 | 4    | 4       |
| 160692-12520 | 4    | 5       |
| 160692-12530 | 4    | 6       |
| 160692-12540 | 4    | 7       |
| 160692-12920 | 4    | 9       |
| 160692-13020 | 4    | 17      |
| 160692-13500 | 4    | 18      |
| 160692-13530 | 4    | 19      |

| PARTS No.    | Fig. | Ref.No. |
|--------------|------|---------|
| 160692-14051 | 5    | 1       |
| 160692-45110 | 9    | 29      |
| 160692-55160 | 6    | 13      |
| 160692-55300 | 6    | 14      |
| 160692-56023 | 7    | 1       |
| 160692-56560 | 7    | 31      |
| 160692-56640 | 7    | 13      |
| 160692-56650 | 7    | 16      |
| 160692-56671 | 7    | 21      |
| 160692-56700 | 7    | 29      |
| 160692-56710 | 7    | 7       |
| 160692-56800 | 7    | 30      |
| 160692-56860 | 7    | 5       |
| 160692-56900 | 7    | 34      |
| 160692-59351 | 6    | 25      |
| 160692-66051 | 8    | 13      |
| 160692-66101 | 8    | 12      |
| 160693-76051 | 9    | 1       |
| 160693-76251 | 9    | 2       |
| 160698-56620 | 7    | 24      |
| 160698-76580 | 9    | 14      |
| 160699-45010 | 9    | 17      |
| 160699-45200 | 9    | 31      |
| 160700-78040 | 9    | 25      |
| 160700-78050 | 9    | 26      |
| 160700-78720 | 9    | 27      |
| 160702-56720 | 7    | 28      |
| 160710-55061 | 6    | 4       |
| 160710-55360 | 6    | 17      |
| 160710-55370 | 6    | 18      |
| 160710-55382 | 6    | 19      |
| 160710-55390 | 6    | 20      |
| 160710-56740 | 7    | 6       |
| 160710-78710 | 6    | 29      |
| 160762-12870 | 4    | 8       |
| 160763-12600 | 4    | 10      |
| 160769-56620 | 7    | 11      |
| 160792-59361 | 6    | 26 -1   |
| 160793-78010 | 9    | 24      |
| 160798-07100 | 3    | 2       |
| 160810-56580 | 7    | 17      |
| 160810-56590 | 7    | 18      |
| 160820-03180 | 2    | 2       |
| 160820-59391 | 6    | 26      |
| 160893-56650 | 7    | 22      |
| 160893-56660 | 7    | 23      |
| 160991-07260 | 3    | 1       |
| 181230-56380 | 7    | 8       |
| 192040-56220 | 21   | 4       |
| 1A1105-16001 | 22   | 1       |

| PARTS No.    | Fig. | Ref.No. |
|--------------|------|---------|
| 1A1470-20090 | 13   | 1       |
| 1A1490-10340 | 25   | 1       |
| 1A1735-23250 | 16   | 2       |
| 1A1735-55350 | 22   | 7       |
| 1A1750-20410 | 13   | 2       |
| 1A1750-20421 | 13   | 3       |
| 1A1750-20431 | 13   | 4       |
| 1A1750-40800 | 28   | 1       |
| 1A1750-40850 | 28   | 2       |
| 1A1750-90050 | 20   | 4       |
|              | 26   | 5       |
|              | 28   | 4       |
| 1A1750-90120 | 22   | 14      |
| 1A1750-90150 | 20   | 5       |
|              | 26   | 6       |
|              | 28   | 5       |
| 1A1750-90200 | 13   | 11      |
|              | 18   | 5       |
| 1A2000-24600 | 17   | 2       |
| 1A2000-62481 | 25   | 4       |
| 1A2000-64210 | 26   | 3       |
| 1A2000-64220 | 26   | 4       |
| 1A2000-83100 | 28   | 3       |
| 1A2001-21250 | 13   | 10      |
| 1A2019-64200 | 26   | 2       |
| 1A2099-86340 | 29   | 5       |
| 1A2099-86360 | 29   | 6       |
| 1A2099-86900 | 29   | 12      |
| 1A2099-86910 | 29   | 14      |
| 1A2130-51400 | 20   | 3       |
| 1A2130-86320 | 29   | 4       |
| 1A2132-12200 | 11   | 3       |
| 1A2132-13001 | 12   | 1       |
| 1A2132-13061 | 12   | 2       |
| 1A2132-13190 | 12   | 4       |
| 1A2132-21040 | 13   | 5       |
| 1A2132-21050 | 13   | 6       |
| 1A2132-21070 | 13   | 7       |
| 1A2132-21080 | 13   | 8       |
| 1A2132-21150 | 13   | 9       |
| 1A2132-27050 | 18   | 2       |
| 1A2132-27100 | 18   | 3       |
| 1A2132-27230 | 18   | 10      |
|              | 25   | 13      |
| 1A2132-32010 | 19   | 1       |
| 1A2132-32020 | 19   | 2       |
| 1A2132-51090 | 20   | 1       |
| 1A2132-51300 | 20   | 2       |
| 1A2132-51600 | 21   | 2       |
| 1A2132-51640 | 21   | 3       |

MODEL : TE600( )  
 PC NO : 0CNP3-G85500

## PARTS No. INDEX

| PARTS No.    | Fig. | Ref.No. |
|--------------|------|---------|
| 1A2132-55040 | 22   | 3       |
| 1A2132-55080 | 22   | 4       |
| 1A2132-55090 | 22   | 5       |
| 1A2132-55111 | 22   | 2       |
| 1A2132-55500 | 22   | 8       |
| 1A2132-55510 | 22   | 9       |
| 1A2132-55520 | 22   | 10      |
| 1A2132-55550 | 22   | 11      |
| 1A2132-55610 | 22   | 12      |
| 1A2132-61260 | 24   | 1       |
| 1A2132-62010 | 25   | 2       |
| 1A2132-62050 | 25   | 14      |
| 1A2132-62100 | 25   | 3       |
| 1A2132-62200 | 25   | 3 -1    |
| 1A2132-62400 | 25   | 5       |
| 1A2132-75500 | 27   | 1       |
| 1A2132-86070 | 29   | 2       |
| 1A2132-88050 | 30   | 3       |
| 1A2132-88051 | 30   | 3 -1    |
| 1A2138-86701 | 29   | 8       |
| 1A2150-86080 | 29   | 3       |
| 1A2172-64100 | 26   | 1       |
| 1A2179-86550 | 29   | 7       |
| 1A2190-23160 | 16   | 1       |
| 1A2199-86700 | 29   | 9       |
| 1A2199-86720 | 29   | 10      |
| 1A2199-86840 | 29   | 11      |
| 1A2199-86900 | 29   | 13      |
| 1A2320-13100 | 12   | 3       |
| 1A2320-13300 | 11   | 7 -1    |
| 1A2320-13301 | 11   | 7 -2    |
| 1A2320-55600 | 22   | 18      |
| 1A2320-87000 | 30   | 1       |
| 1A2321-13310 | 11   | 7       |
| 1A2509-12000 | 11   | 2       |
| 1A2509-23010 | 14   | 1       |
| 1A2509-23020 | 14   | 2       |
| 1A2509-23100 | 15   | 1       |
| 1A2509-23300 | 16   | 3       |
| 1A2509-23350 | 16   | 4       |
| 1A2509-23400 | 16   | 5       |
| 1A2509-24000 | 17   | 1       |
| 1A2509-27000 | 18   | 1       |
| 1A2509-51500 | 21   | 1       |
| 1A2509-55210 | 22   | 6       |
| 1A2509-61000 | 23   | 1       |
| 1A2509-61500 | 24   | 2       |
| 1A2509-86000 | 29   | 1       |
| 1A2740-13300 | 11   | 7 -3    |
| 1D1140-11420 | 11   | 1       |

| PARTS No.    | Fig. | Ref.No. |
|--------------|------|---------|
| 1D1140-11420 | 12   | 5       |
| 1E6150-56040 | 18   | 4       |
| 1E6570-65750 | 22   | 13      |
| 760690-01500 | 1    | 10      |
| 760690-01561 | 1    | 1       |
| 760690-21701 | 5    | 14      |
| 760690-22501 | 5    | 23      |
| 760690-23700 | 5    | 29      |
| 760692-55704 | 6    | 2       |

| PARTS No. | Fig. | Ref.No. |
|-----------|------|---------|
|-----------|------|---------|

| PARTS No. | Fig. | Ref.No. |
|-----------|------|---------|
|-----------|------|---------|



***YANMAR CO., LTD.***